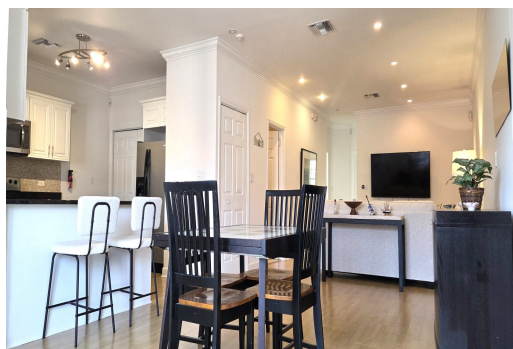
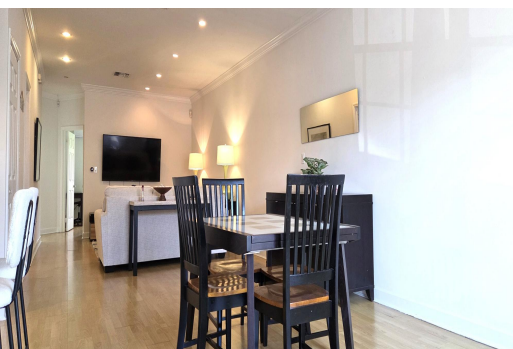


# HAMPTON RIDGE, Westridge, New Providence/Paradise Island



**Located in the highly desirable Hampton Ridge community, this spacious 2-bedroom, 2-bathroom...**

Located in the highly desirable Hampton Ridge community, this spacious 2-bedroom, 2-bathroom apartment offers the perfect blend of comfort and convenience – just steps away from the bustling Cable Beach shopping district and a short 5 minute walk from the beach.. This well-appointed unit features an open-concept living and dining area, a fully equipped kitchen, and two generous bedrooms, including a master suite with en-suite bath. Natural light fills the space, creating a warm and welcoming atmosphere. Enjoy the convenience of walking distance to grocery stores, restaurants, cafes, banks, and public transportation. Hampton Ridge is a secure, gated community with landscaped grounds and assigned parking. Whether you're a working professional or small family, this is the ideal place to cal...read more on our website.

Bedrooms: 2

Bathrooms: 2

Lot Size: 1100

Subdivision: Westridge

Features: Family Oriented,

Fully Walled, Furnished,

Gated Community,

Highway Access,

Recreation Nearby,

Shopping Nearby,

Swimming Pool

HAMPTON RIDGE, Westridge,

New Providence/Paradise Island

Phone:



**\$3.300 ID# M63330** [View Online](#)  
[www.sarlesrealty.com](http://www.sarlesrealty.com)