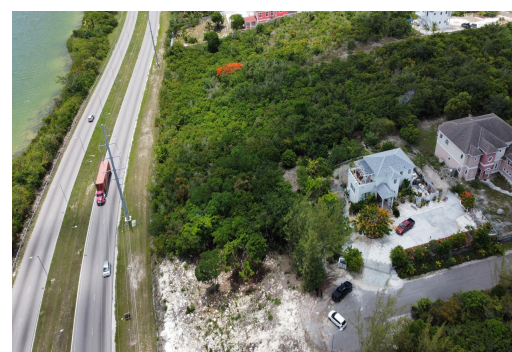
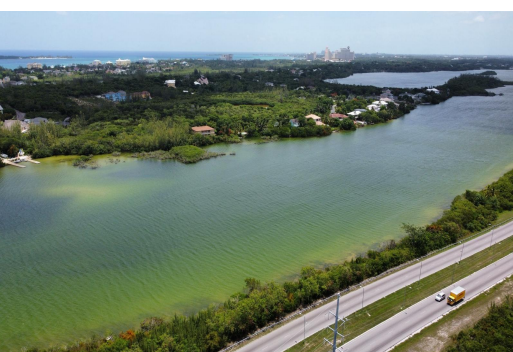
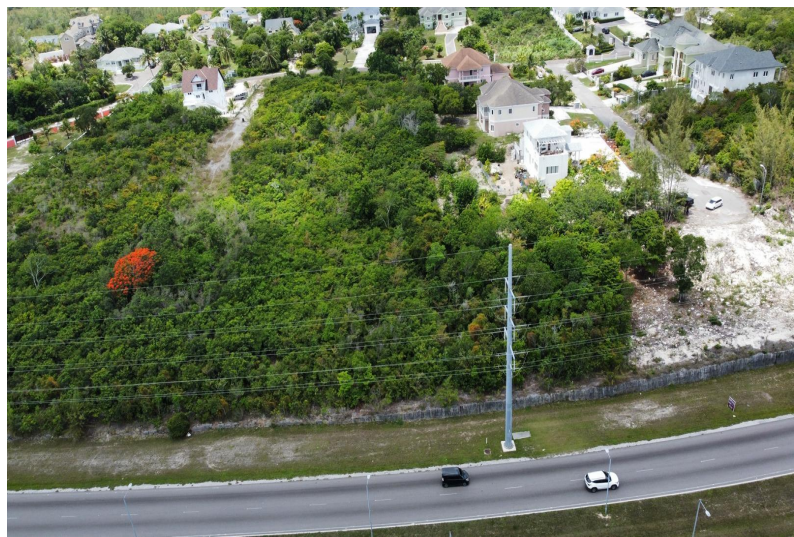
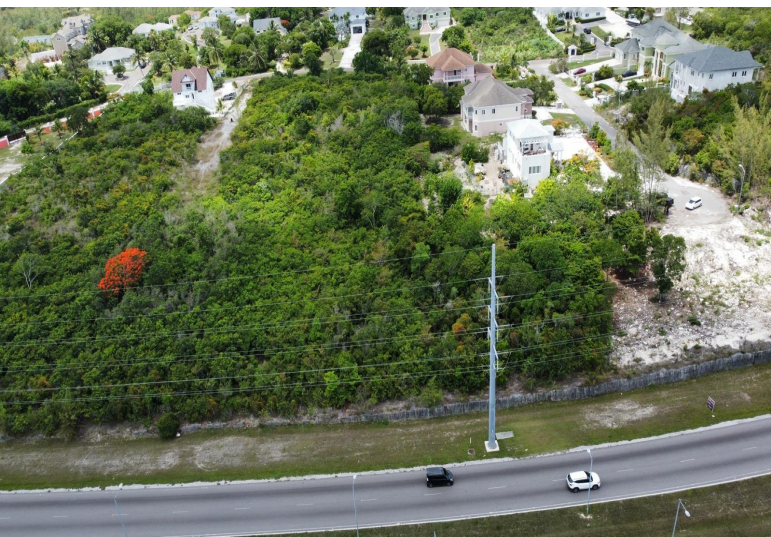


# SOUTHWEST RIDGE, Westridge, New Providence/Paradise Isl



## This expansive 1.83 acres lot in the highly sought-after South Westridge area offers endless...

This expansive 1.83 acres lot in the highly sought-after South Westridge area offers endless possibilities for development. Zoned for residential over looking the beautiful Lake Cunningham. It s quiet area , ideal for a rearing family and your dream home. With a nearby beach and Bahamar Resort, this property offers an exceptional location for both living and business. The size of the lot provides ample space ensuring you have room to maximize this incredible opportunity. Donâ€™t miss out on this rare chance to own a prime piece of real estate in one of Nassauâ€™s most desirable areas....read more on our website.

Bedrooms: 0  
Bathrooms: 0  
Lot Size: 79715  
Subdivision: Westridge  
Features: None

SOUTHWEST RIDGE,  
Westridge, New  
Providence/Paradise Island  
Phone:



**\$555.000 ID# M63323** [View Online](#)  
[www.sarlesrealty.com](http://www.sarlesrealty.com)