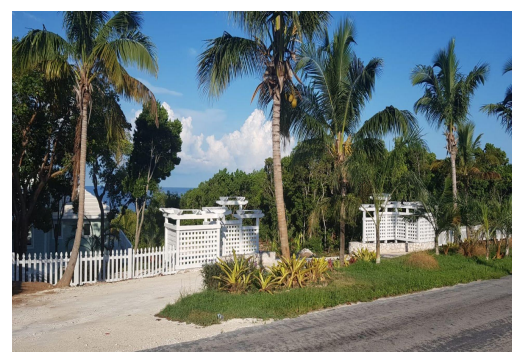


TURTLE WAY, Governor's Harbour, Eleuthera



Coral Point at Turtle Bay is a stunning 3-bed, 3-bath waterfront home set on over half an acre in...

Coral Point at Turtle Bay is a stunning 3-bed, 3-bath waterfront home set on over half an acre in an exclusive, landscaped enclave near the settlement of Governor's Harbour. Designed with classic Bahamian charm and built for durability, the home features a private pool, lush tropical gardens, and panoramic Caribbean views. The spacious upstairs primary suite offers breathtaking vistas and a private balcony. Fully furnished and rental-ready, Coral Point is part of a gated 4-acre estate with shared access to a cabana and jetty. Located just minutes from Governor's Harbour Airport, pink sand beaches, fine dining, local shops, and cultural landmarks, this rare property blends luxury, privacy, and investment appeal on one of Eleuthera's most desirable coastlines.....read more on our website.

Bedrooms: 3
Bathrooms: 3
Lot Size: 29396
Subdivision: Governor's Harbour
Features: Central location, Cul-de-sac, Easy Access, Furnished, Gated Community, Main Level Entry, Pets Allowed, Quiet Area, Shopping Nearby, Short Term Allowed, Sound, Swimming Pool, Underground Services, View - Ocean, Waterfront - Ocean

TURTLE WAY,
Governor's Harbour,
Eleuthera
Phone:



\$1,550,000 ID# M63309 [View Online](#)
www.sarlesrealty.com