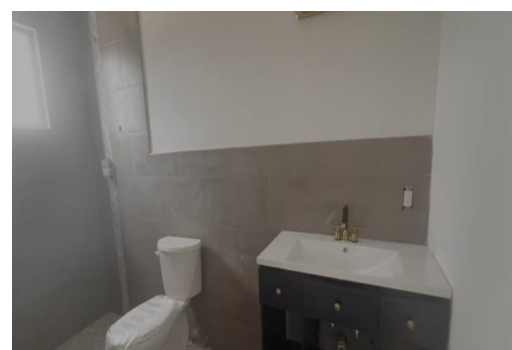
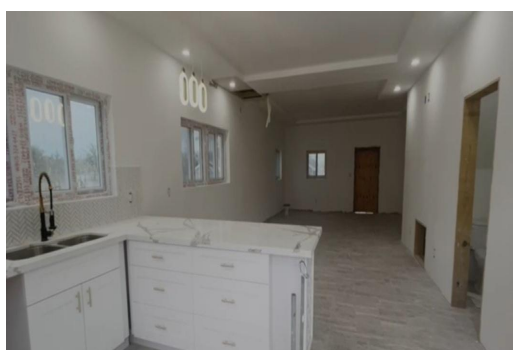


# OLYMPIC DRIVE, West Bay Street, New Providence/Paradise Island



**Step into luxury with our newest 2-storey incomplete townhouse unit. This charming unit is 1 out of...**

Step into luxury with our newest 2-storey incomplete townhouse unit. This charming unit is 1 out of 4 units nestling on a 12,000 square foot lot in the quiet Western community of Tropical Gardens on Olympic Drive, near the homes of our famous Bahamian Olympians. Once completed, Unit #3 will be offered semi-furnished with stainless steel appliances; interior design and decor selected, that stretches before an open concept floor, to showcase the perfection of contemporary luxury living. Step inside, you'll find 3 bedrooms with ensuite bathrooms, along with a half bathroom, spread across the unit. The possibilities are endless! Plus all residents can enjoy the comfort of a shared swimming pool. Conveniently located nearby shops, restaurants, beaches & close to the Sir Lynden Pindling International Airport...read more on our website.

Bedrooms: 3  
Bathrooms: 3  
Lot Size: 12000  
Subdivision: West Bay Street, New Providence/Paradise Island  
Features: Adult Oriented, Can Be Rented, Easy Access, Family Oriented, Hillside, Hurricane Windows, Impact Shutters, Impact Windows, Low Maintenance Yard, Main Level Entry, Partially Furnished, Phone to Lot, Quiet Area, Recreation Nearby, Road - Paved, Shopping Nearby, Sidewalk, Sprinkler System, Swimming Pool, View - City, View - Ocean, Wheelchair Access

OLYMPIC DRIVE, West Bay Street, New Providence/Paradise Island  
Phone:



**\$500,000 ID# M59074 [View Online](#)**  
**[www.sarlesrealty.com](http://www.sarlesrealty.com)**