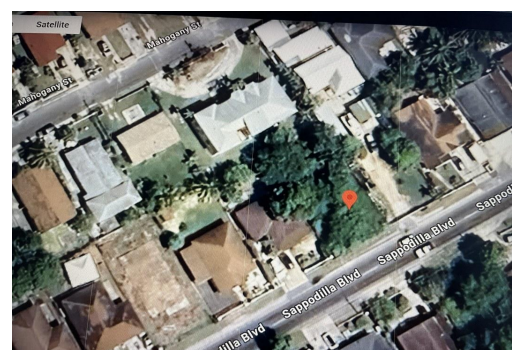
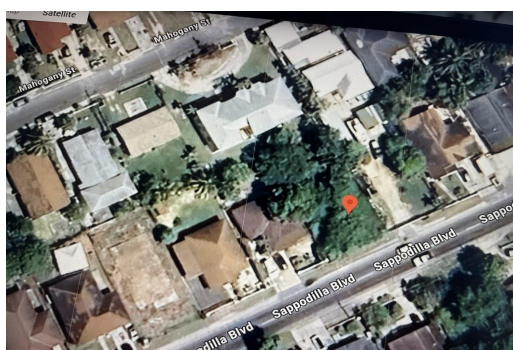
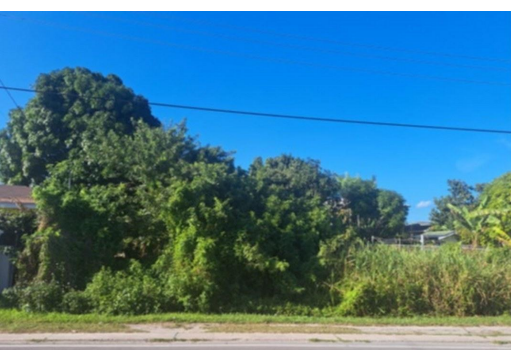
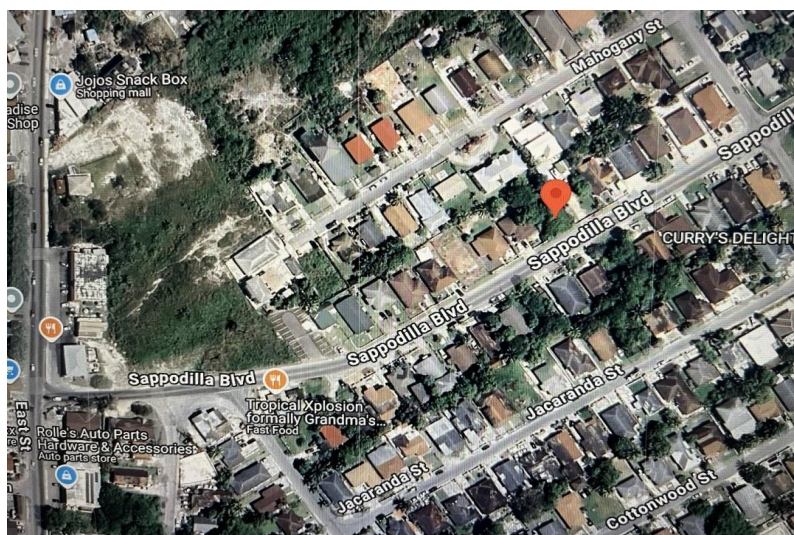
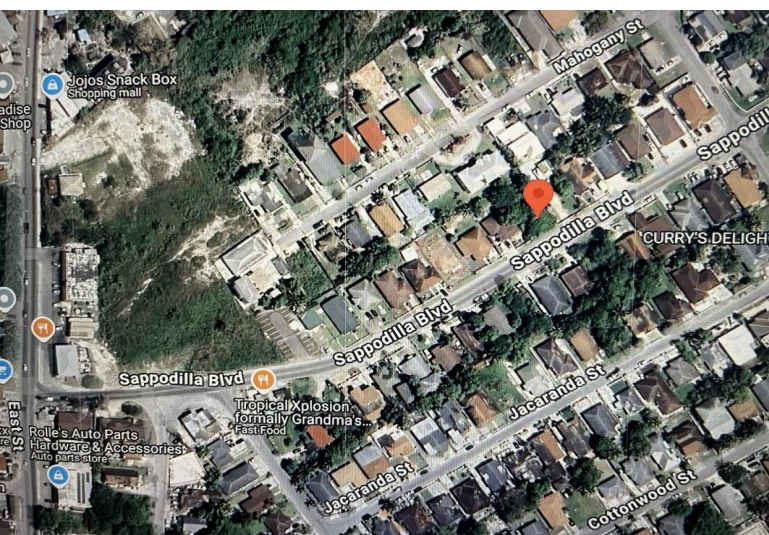


WOOD GARDENS, Pinewood Gardens, New Providence/Paradise Island



Affordable single family lot on Sappodilla Blvd, just 8 lots in on the left from East Street South....

Affordable single family lot on Sappodilla Blvd, just 8 lots in on the left from East Street South. An excellent starter investment to build your home or flip to diversify and enhance your portfolio. Close proximity to Porky's Gas Station, foodstores, restaurants, churches, shopping, public transportation, schools, banks, police station, and so much more. Call now to secure this great opportunity to own your piece of real estate today....read more on our website.

Bedrooms: 0
Bathrooms: 0
Lot Size: 5000
Subdivision: Pinewood Gardens
Features: None

251 PINWOOD GARDENS,
Pinewood Gardens, New
Providence/Paradise Island
Phone:



\$52,000 ID# M60282 [View Online](#)
www.sarlesrealty.com