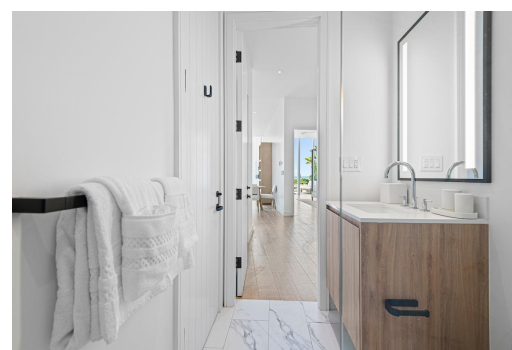
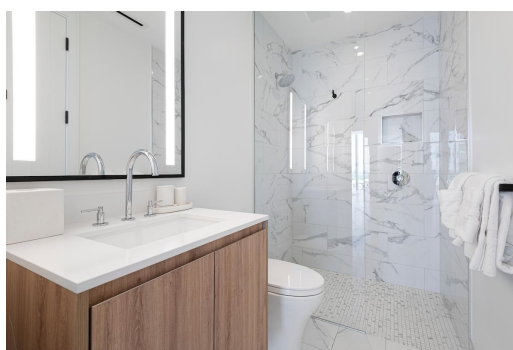
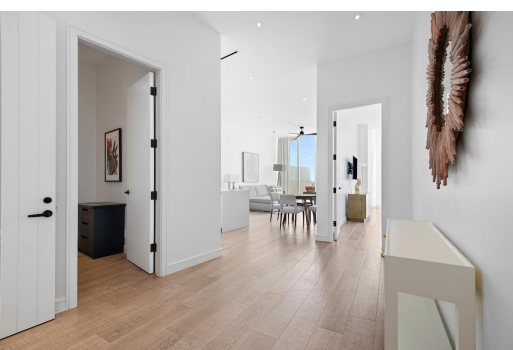


GOLDWYNN, West Bay Street, New Providence/Paradise Island



Experience luxury coastal living in this exquisite 1,840 sq. ft. beachfront condo at Goldwynn...

Experience luxury coastal living in this exquisite 1,840 sq. ft. beachfront condo at Goldwynn Resort & Residences. This 2-bedroom, 2-bathroom unit features soaring 12-foot ceilings and floor-to-ceiling windows and doors that fill the space with natural light and frame breathtaking sea views. The open-concept layout includes a modern kitchen, dining area, and living room that opens to a private balcony—also accessible from the spacious master suite, which boasts a walk-in closet and a spa-like bathroom with double vanity. Enjoy exclusive access to Goldwynn's signature infinity pool, rooftop pool, state-of-the-art fitness club, full-service spa, and on-site dining. Just a short walk from Baha Mar Hotel & Casino and Royal Blue Golf Course, and a quick drive to Lynden Pindling Airport and ...read more on our website.

Bedrooms: 2

Bathrooms: 2

Lot Size: 0

Subdivision: West Bay Street

GOLDWYNN, West Bay Street,
New Providence/Paradise Island
Phone:

Features: 24 Hour

Security, Beach Front,

Central location,

Furnished, Gated

Community, Golf Course

Nearby, Impact Windows,

Landscaped, Recreation

Nearby, Road - Paved,

Shopping Nearby,

Stand-by Generator,

Swimming Pool, View -

Ocean, Waterfront -

Ocean



\$2,100,000 ID# M63091 [View Online](#)
www.sarlesrealty.com