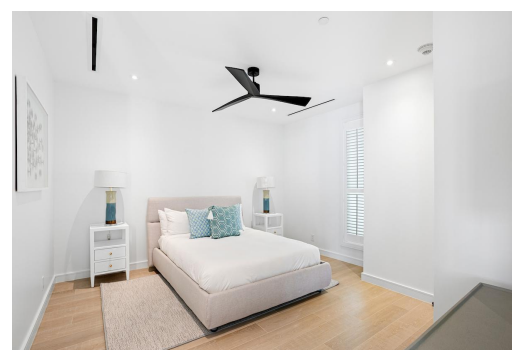
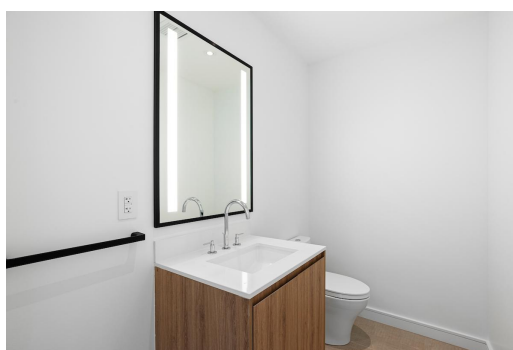
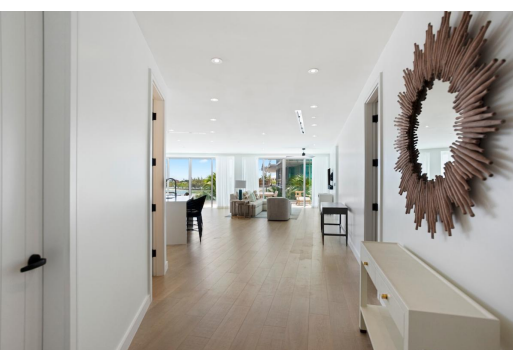
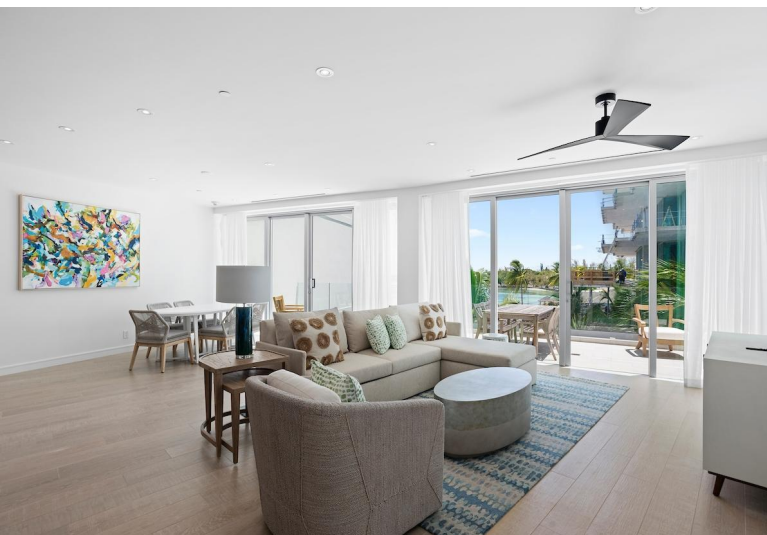


GOLDWYNN, West Bay Street, New Providence/Paradise Island



Wake up to stunning sunrises and serene partial ocean views in this 2-bedroom, 2.5-bathroom condo,...

Wake up to stunning sunrises and serene partial ocean views in this 2-bedroom, 2.5-bathroom condo, ideally situated on the eastern side of Goldwynn Resort & Residences. Floor-to-ceiling windows flood the open-concept kitchen, dining, and living areas with natural light, creating a bright, airy space. A spacious balcony—perfect for relaxing or entertaining—is accessible from the living room, dining area, and master bedroom. The primary suite includes a walk-in closet and spa-like bathroom with double vanity. Ample storage is featured throughout the home. Residents enjoy Goldwynn's signature infinity pool, rooftop pool, fitness center, full-service spa, and multiple dining options. Just a short walk to Baha Mar Hotel & Casino and Royal Blue Golf Course, and minutes from the airport and...read more on our website.

Bedrooms: 2

Bathrooms: 2

Lot Size: 0

Subdivision: West Bay Street

GOLDWYNN, West Bay Street,
New Providence/Paradise Island
Phone:

Features: 24 Hour

Security, Beach Front,

Central location,

Furnished, Gated

Community, Golf Course

Nearby, Impact Windows,

Landscaped, Recreation

Nearby, Road - Paved,

Shopping Nearby,

Stand-by Generator,

Swimming Pool, View -

Ocean, Waterfront -

Ocean



\$1.950,000 ID# M63092 [View Online](#)
www.sarlesrealty.com