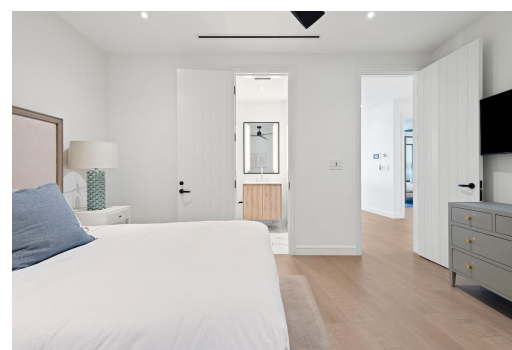
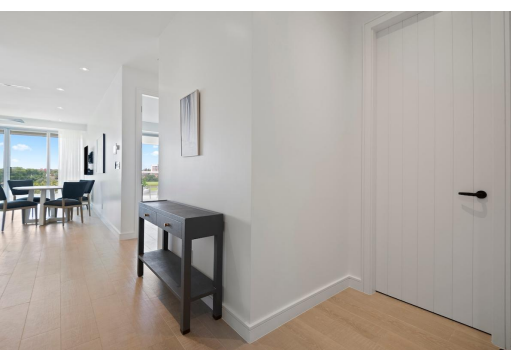


GOLDWYNN, West Bay Street, New Providence/Paradise Island



Enjoy luxurious island living in this 1,748 sq. ft. condo at Goldwynn Resort & Residences with...

Enjoy luxurious island living in this 1,748 sq. ft. condo at Goldwynn Resort & Residences with stunning golf course views and abundant natural light from floor-to-ceiling windows. The modern kitchen features sleek cabinetry and quality appliances, flowing into the dining and living areas—perfect for entertaining. This home offers 2 spacious bedrooms and 2 bathrooms, including a master suite with a walk-in closet and spa-inspired bathroom with double vanity. Step onto your private balcony, accessible from the living room and master bedroom. This inviting space is perfect for relaxing, entertaining, or enjoying peaceful views of the lush Royal Blue Golf Course. Residents enjoy Goldwynn's signature infinity pool, rooftop pool, fitness club, spa, dining options, and other amenities. Just a...read more on our website.

Bedrooms: 2

Bathrooms: 2

Lot Size: 0

Subdivision: West Bay Street

GOLDWYNN, West Bay Street,
New Providence/Paradise Island

Phone:

Features: 24 Hour

Security, Beach Front,

Central location,

Furnished, Gated

Community, Golf Course

Nearby, Impact Windows,

Landscaped, Recreation

Nearby, Road - Paved,

Shopping Nearby,

Stand-by Generator,

Swimming Pool, View -

Ocean, Waterfront -

Ocean



\$1.540,000 ID# M63094 [View Online](#)
www.sarlesrealty.com