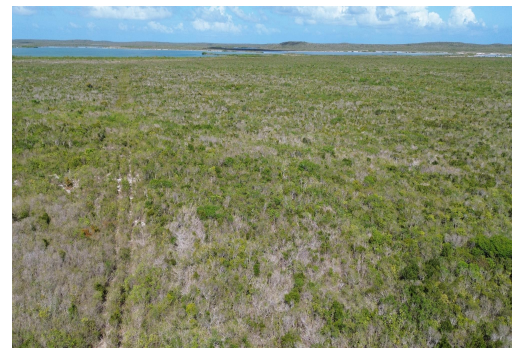
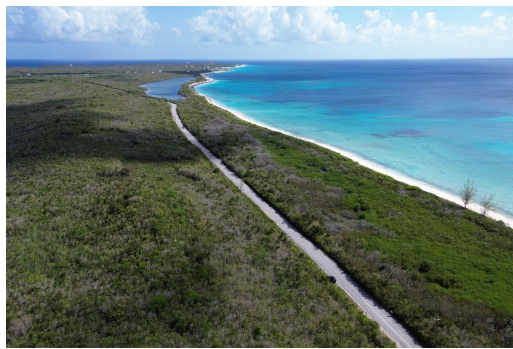


QUEENS HWY, Long Bay, San Salvador



A fantastic opportunity to own 16.946 Acres on the beautiful island of San Salvador, where Columbus...

A fantastic opportunity to own 16.946 Acres on the beautiful island of San Salvador, where Columbus first landed in the new world. Elevated Lake front property with gorgeous ocean views of powder soft, white sand beaches gracefully slopes eastwards towards the Great Lake. A short 20 minute drive south of Cockburn Town, and just 5 minutes past Sugar Loaf, along Long Bay you will find this fantastic piece of lakefront acreage. If you have dreamt of owning your own land with vast acreage or developing a vacation retreat, or out island subdivision, this is your property! Utilities are available from the paved Queens Hwy. Don't let this opportunity pass you by!...read more on our website.

Bedrooms: 0

Bathrooms: 0

Lot Size: 738168

Subdivision: Long Bay

Features: None,

Waterfront - Lake

QUEENS HWY, Long Bay, San
Salvador
Phone:



\$406.704 ID# M62976 [View Online](#)
www.sarlesrealty.com