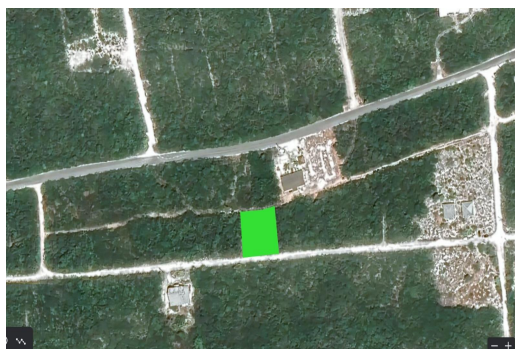
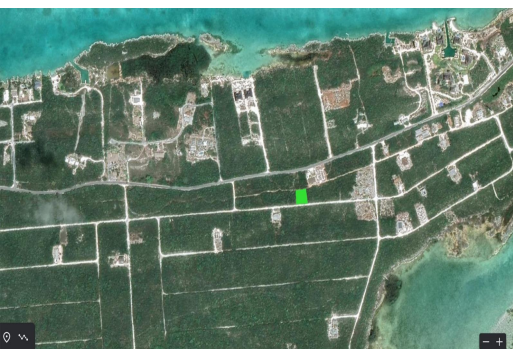


# No. 12 BAHAMA SOUND, Bahama Sound, Exuma &#038; Exuma



**Nestled on a scenic hilltop in Hartswell, Great Exuma, this parcel offers second floor level...**

Nestled on a scenic hilltop in Hartswell, Great Exuma, this parcel offers second floor level panoramic sea views, only 5 minutes from the beach and providing easy access being just 13 minutes from Georgetown. Owners can enjoy tranquility and natural beauty, 3 minutes drive from access to Moriah Cay National Park, The Cut/Lazy River" and the bridge to Little Exuma. Perfect location for those who like to fish, paddleboard, kayak and snorkel. This is an outstanding location to build your Bahamas dream home! Electricity and water infrastructure in place. Close to restaurants, and stores. Contact us for this amazing opportunity!...read more on our website.

Bedrooms: 0  
Bathrooms: 0  
Lot Size: 10000  
Subdivision: Bahama Sound  
Features: None

No. 12 BAHAMA SOUND,  
Bahama Sound, Exuma &#038;  
Exuma Cays  
Phone:



**\$55,000 ID# M58382** [View Online](#)  
[www.sarlesrealty.com](http://www.sarlesrealty.com)