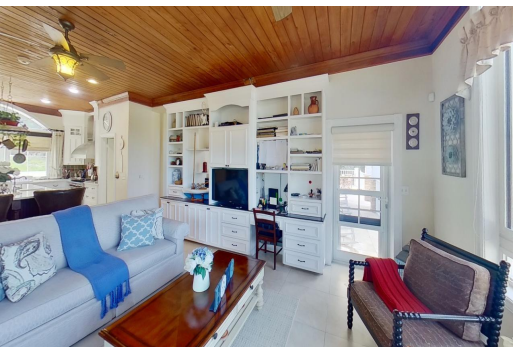


WESTRIDGE, Westridge, New Providence/Paradise Island



This magnificent two-story home is enclosed with elevated lush landscape, 4 bedrooms 3.5 baths,...

This magnificent two-story home is enclosed with elevated lush landscape, 4 bedrooms 3.5 baths, fully furnished, features over 2,800 square feet of living space, 629 square feet of garage space, and more than 350 square feet of open/covered patio space with breathtaking yard views, on an immaculately landscaped 43,083 square foot corner lot. The yard is fully enclosed with blocked walls and 8" chain link fence. This home is perfectly laid out with two additional average size bedrooms on the second floor and one on the first (with its neighboring full bath). Additionally, it includes an extended driveway, with ¾ rock stone, a backup 22 KW Generac generator, a 2-door garage, as you drive up to the home, and a laundry on the first floor. This well sought out elevated home, has a pool as yo...read more on our website.

Bedrooms: 4
Bathrooms: 3
Lot Size: 43083
Subdivision: Westridge
Features: Cable, Family
Oriented, Fully Fenced,
Fully Walled, Furnished,
Impact Shutters, Phone to
Lot, Quiet Area,
Shopping Nearby,
Stand-by Generator

WESTRIDGE, Westridge, New
Providence/Paradise Island
Phone:



\$1.589,000 ID# M58119 [View Online](#)
www.sarlesrealty.com