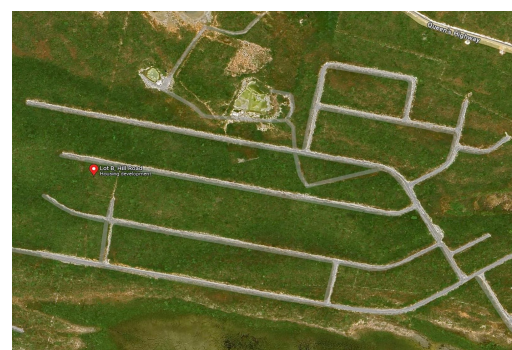
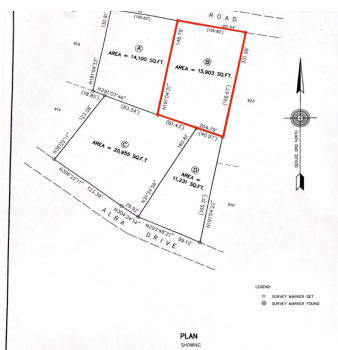


ROAD, EXUMA VIEW, Little Exuma, Exuma & Exum



Elevate your view with this 15,903 sqft single-family lot in the tranquil Exuma View community....

Elevate your view with this 15,903 sqft single-family lot in the tranquil Exuma View community. Don't miss out on this opportunity to build your dream house at the top of the lot and enjoy views of the Bahama Bank and barrier islands. This lot has an amazing elevation of 50 degrees for breathtaking sea-to-sea views. Exuma View is located on the leeward side of Little Exuma, a 40-minute drive from the George Town International Airport, a 7-minute drive from the world-famous Tropic of Cancer Beach, and a 2-3 minute drive to Pretty Molly and Forbes Hill Beach. It is easily accessible via Queens Highway, with paved roads and power. Exuma enjoys daily flights from Atlanta, Charlotte, Fort Lauderdale, Miami, and Nassau....read more on our website.

Bedrooms: 0
Bathrooms: 0
Lot Size: 15903
Subdivision: Little Exuma
Features: Highway
Access, None, Potential
Recreation, Private
Setting, Quiet Area,
Recreation Nearby, View -
Lake

HILL ROAD, EXUMA VIEW, Little
Exuma, Exuma & Exuma
Cays
Phone:

\$92,000 ID# M58642 [View Online](#)
www.sarlesrealty.com

