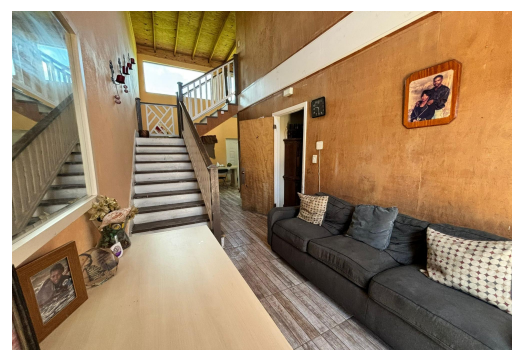


CRESCENT, BAILLOU H, Carmichael Road, New Providence



Unlock a rare investment opportunity with this spacious fourplex, offering a total of 10 bedrooms...

Unlock a rare investment opportunity with this spacious fourplex, offering a total of 10 bedrooms and 8 bathrooms. This income-generating property consists of 4 units: a 4-bed, 2-bath main house and three 2-bed, 2-bath townhouses. Situated on a hillside lot, this property is strategically positioned to avoid flooding issues, a major plus for property owners in the Bahamas. With its large, spacious units, tenants will enjoy comfortable living in a location that blends convenience with a quiet, relaxed atmosphere. Whether you're an investor looking to expand your real estate portfolio or someone seeking a steady income stream from rental properties, this fourplex presents an excellent opportunity. Its central location puts tenants just minutes away from popular shops, dining options, and e...read more on our website.

Bedrooms: 10

Bathrooms: 8

Lot Size: 8750

Subdivision: Carmichael

Features: Fully Fenced

KIM’S CRESCENT,
BAILLOU H, Carmichael Road,
New Providence/Paradise Island

Phone:



\$575.000 ID# M59884 [View Online](#)
www.sarlesrealty.com