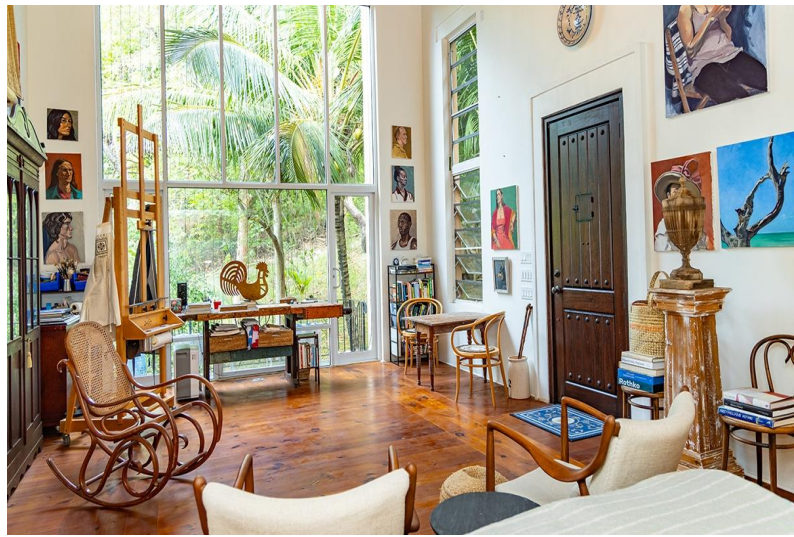


SANDYCOMBE, Harbour Island, Eleuthera



Sandycombe on Juicy Hill â€“ Steps from Pink Sand Beach Located in Harbour Islandâ€™s coveted Juicy...

Sandycombe on Juicy Hill â€“ Steps from Pink Sand Beach Located in Harbour Islandâ€™s coveted Juicy Hill neighborhood, Sandycombe is a unique two-story concrete block stucco property built in 2018. Originally designed as an artistâ€™s studio, it spans 1,640 sq. ft. and blends Mediterranean charm with functional design. The upper level features an open-plan studio with vaulted ceilings, a large north-facing window, a reading loft, two balconies, a kitchen, and a bathroom. The lower level includes a garage, storage, laundry room, and half bath. Connected by an exterior wooden staircase and deck, the property is surrounded by mature native plants, including a coconut palm grove. Just steps from the private beach access path to Pink Sand Beach, this peaceful retreat is conveniently close to...read more on our website.

Bedrooms: 1

Bathrooms: 1

Lot Size: 9150

Subdivision: Harbour

Island

Features: Cable, Garden

Area, Short Term

Allowed, Unfurnished

SANDYCOMBE, Harbour Island,
Eleuthera
Phone:



\$2,500,000 ID# M60077 [View Online](#)
www.sarlesrealty.com