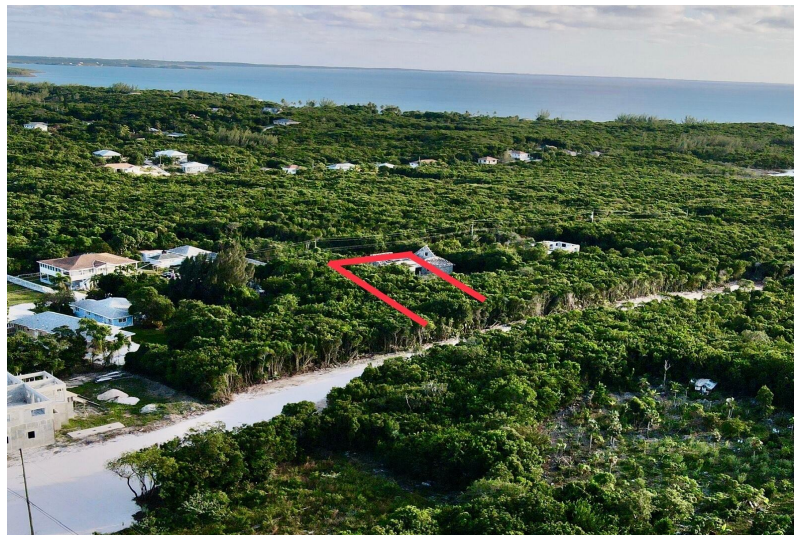
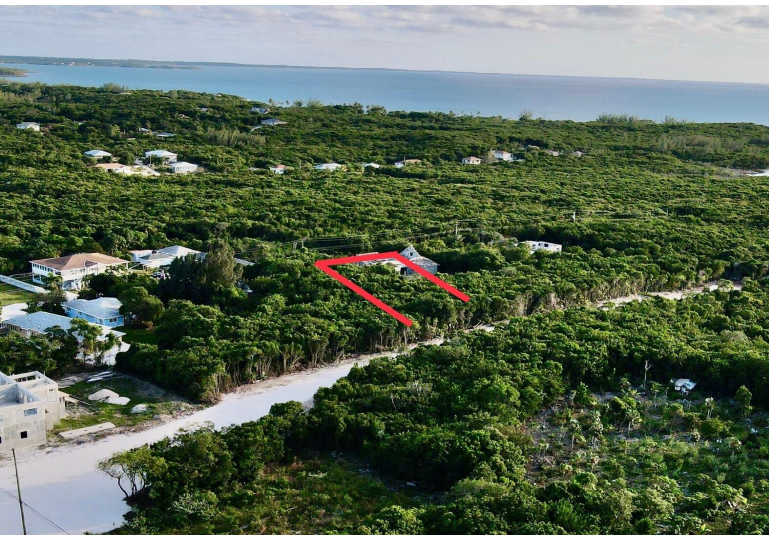


# EXQUISITE PALMS LOT #17, Palmetto Point, Eleuthera



## Exquisite Palms offers a life of opulence and peace, in a secured gated community, alongside the...

Exquisite Palms offers a life of opulence and peace, in a secured gated community, alongside the radiant environment and culture of Eleuthera. This Private community is nestled in the heart of Palmetto Point, very close to shopping centers, recreation and cultural centers, pink sand beaches, schools, medical facilities, two international airports and the marine shipping ports. Getting started on this lot is easy, as All utilities are installed and accessible to all lots. Exquisite Palms has a \$100.00 monthly HOA fee to ensure value on investments is maintained. Build on this lot and enjoy the good life with your family, or you can enjoy the benefits of a healthy rental income if your wish....read more on our website.

Bedrooms: 0  
Bathrooms: 0  
Lot Size: 6000  
Subdivision: Palmetto Point  
Features: 24 Hour Security, Can Be Rented, Central location, Cul-de-sac, Easy Access, Family Oriented, Fuel to Lot, Fully Fenced, Gated Community, Highway Access, Level Lot, Marina Nearby, No Thru Road, Phone to Lot, Quiet Area, Recreation Nearby, Road - Paved, Seniors Oriented, Shopping Nearby, Treed Lot, Underground Services

EXQUISITE PALMS LOT #17,  
Palmetto Point, Eleuthera  
Phone:



**\$60,000 ID# M60414** [View Online](#)  
[www.sarlesrealty.com](http://www.sarlesrealty.com)