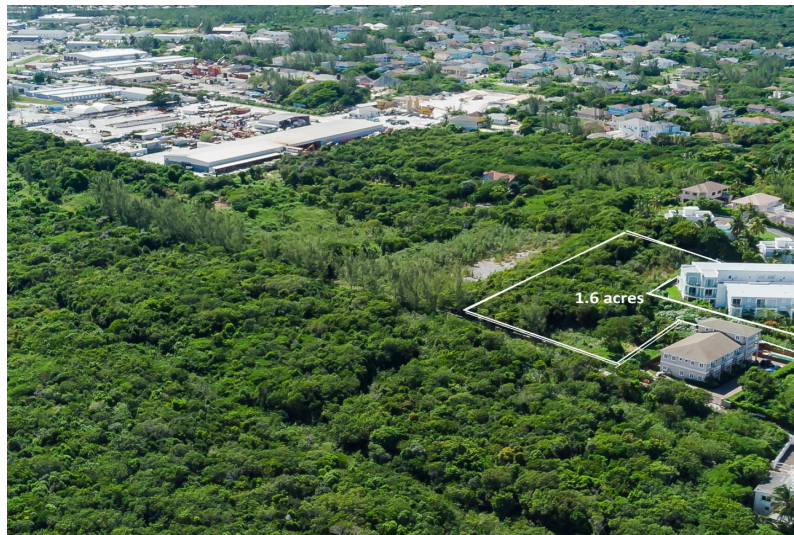
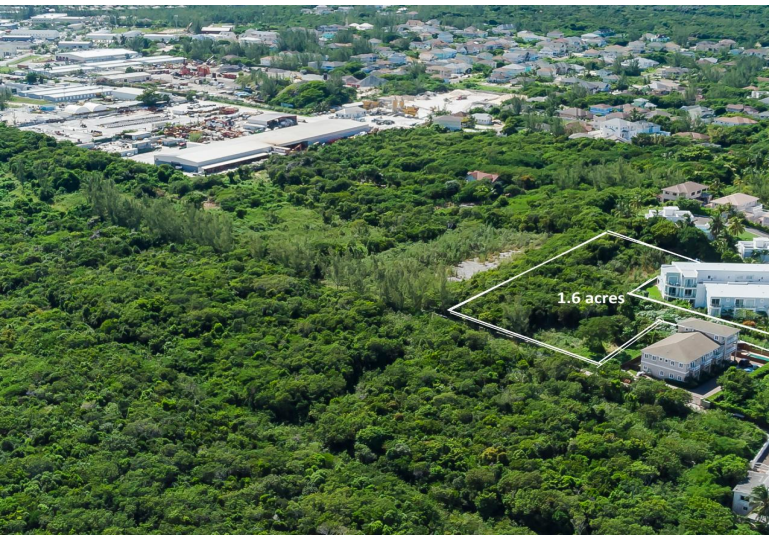


NT RD, WEST BAY S, West Bay Street, New Providence/Paradise Island



This 1.6-acre plot of land is perfectly situated just off West Bay Street, in close proximity to...

This 1.6-acre plot of land is perfectly situated just off West Bay Street, in close proximity to Solemar, Miramar West Condos and the stunning beach. Ideal for savvy developers, this lot offers immense potential to create upscale condominiums in an area highly sought after by discerning buyers. Additionally, an adjacent 3-acres of land available, allowing for the possibility of an even more remarkable development. Don't miss out on this chance to capitalize on a remarkable location.....read more on our website.

Bedrooms: 0

Bathrooms: 0

Lot Size: 68477

Subdivision: West Bay Street

Features: None

SEAN GRANT RD, WEST BAY
S, West Bay Street, New
Providence/Paradise Island
Phone:



\$1,300,000 ID# M55810 [View Online](#)
www.sarlesrealty.com