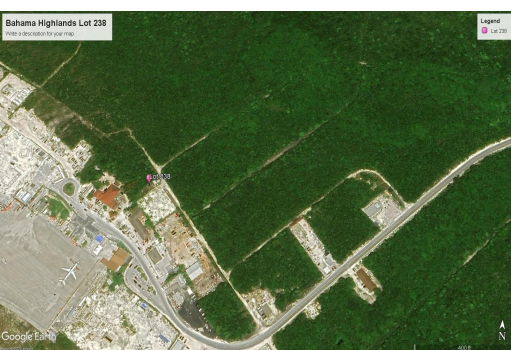
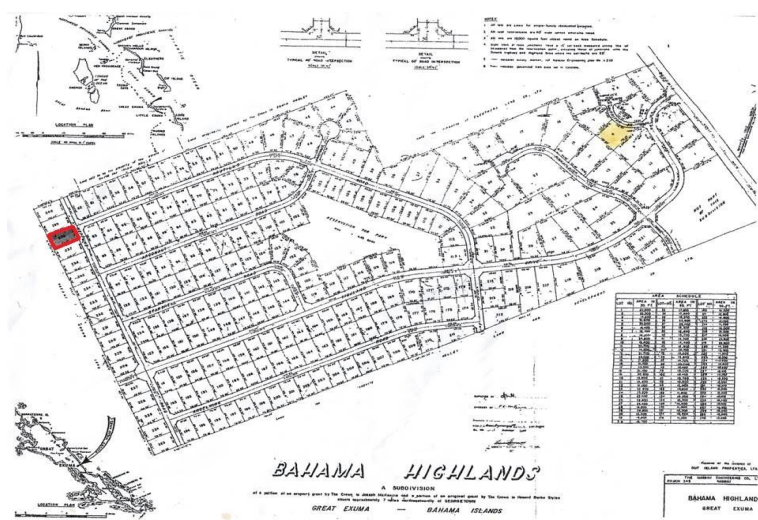
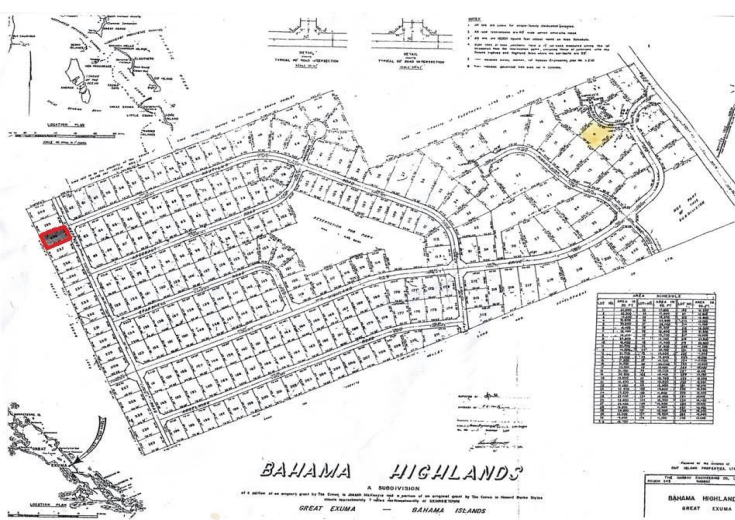


NEPTUNE ROAD, Bahama Highlands, Exuma & Exuma



Lot 238, Bahama Highlands is located directly behind Kermit's Airport Lounge & Bar which...

Lot 238, Bahama Highlands is located directly behind Kermit's Airport Lounge & Bar which is situated across from the main terminal at Exuma's International Airport. Ideal location for office/storage facility.....read more on our website.

Bedrooms: 0

Bathrooms: 0

Lot Size: 11040

Subdivision: Bahama Highlands

Features: Golf Course

Nearby, Level Lot,

Marina Nearby, None,

Southern Exp

238 NEPTUNE ROAD, Bahama Highlands, Exuma & Exuma Cays
Phone:



\$145.000 ID# M60525 [View Online](#)
www.sarlesrealty.com