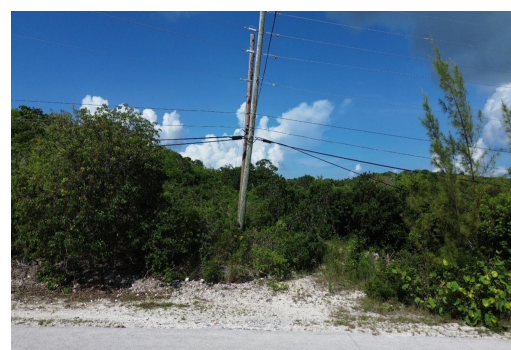
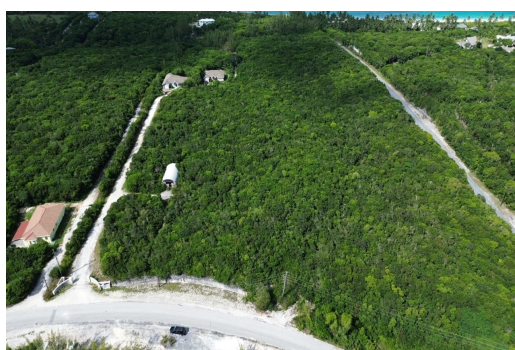


LOT 13 HUT POINT, Governor's Harbour, Eleuthera



This residential estate lot in Hut Point Estates has beach access and utilities nearby. It is...

This residential estate lot in Hut Point Estates has beach access and utilities nearby. It is spacious at over 25,000 square feet, providing privacy and yard space for entertaining and gardening. The location is ideal, being surrounded by Freedom Estates, Hut Point Inn, and just south of Sky Beach and the Governor's Harbour Airport yet, just north of Governor's Harbour and the island's capital and business zone. The beach access across Bank's road is steps away from the lot and ushers you to a breathtaking pink sand beach. Eleuthera offers endless opportunities for beaching, kayaking, snorkeling, shelling, sea, sun, and star gazing with warm, friendly people in the community. Shops, restaurants, and entertainment can be found in the nearby settlements of Governor's Harbour and James Cister...read more on our website.

Bedrooms: 0

Bathrooms: 0

Lot Size: 25625

Subdivision: Governor's
Harbour

Features: Family Oriented,
Gated Community, None,
Treed Lot

LOT 13 HUT POINT,
Governor's Harbour,
Eleuthera
Phone:



\$99,000 ID# M59052 [View Online](#)
www.sarlesrealty.com