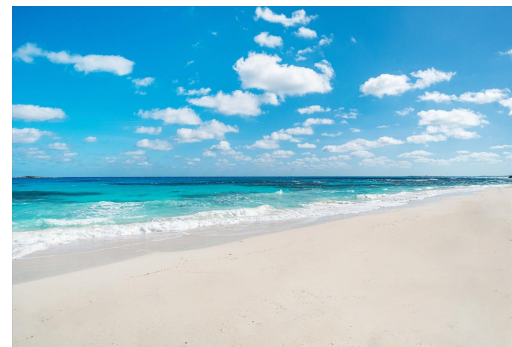
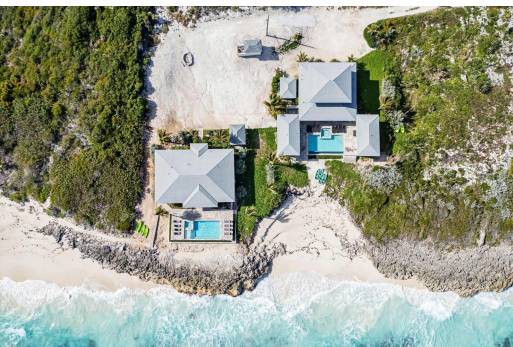


7;S HILL BEACHFRONT, Farmer’s Hill, Exuma &#



Farmers Hill Beachfront Estate presents an exceptional opportunity to own a premier beachfront...

Farmers Hill Beachfront Estate presents an exceptional opportunity to own a premier beachfront property on Great Exuma. With an acre of land and 200 feet of stunning beach frontage, this estate is ideally situated just moments from Exuma's International Airport. It features two newly constructed luxury homes, thoughtfully designed for comfort, elegance, and island living. The largest of the two homes, "Treasure Cove", boasts 2,800 square feet of refined living space. It includes six bedrooms and four-and-a-half bathrooms, with the main house offering four bedrooms across two stories. Two charming guest cottages flank the pool, each with a private bedroom and ensuite bathroom. Treasure Cove's inviting pool and hot tub overlook a secluded cove beach, providing a private oasis for relaxat...read more on our website.

Bedrooms: 10

Bathrooms: 7

Lot Size: 43560

Subdivision: Farmer's Hill

FARMER’S HILL

BEACHFRONT, Farmer’s

Features: Beach Front, Hill, Exuma & Exuma Cays

Furnished, View - Ocean,

Phone:

Waterfront - Ocean



\$5.250,000 ID# M60698 [View Online](#)
www.sarlesrealty.com