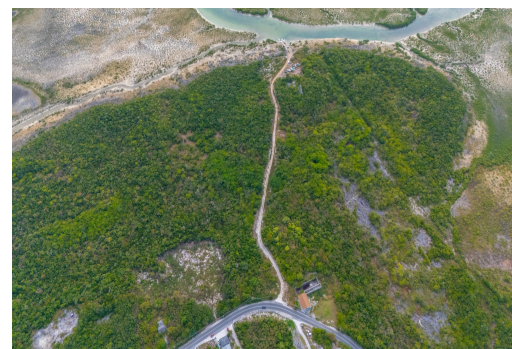
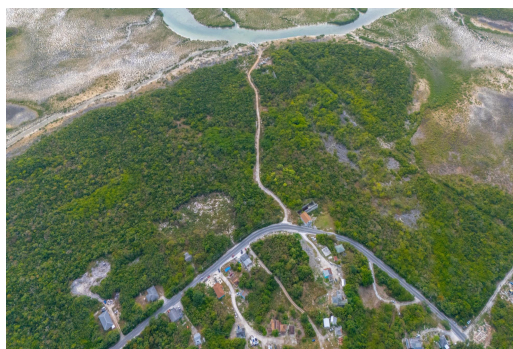


HERMITAGE/MOSS TOWN R, Hermitage, Exuma & Exu



This property is a 15 Acre parcel in Hermitage Exuma. It has rolling hills with sunset views. It is...

This property is a 15 Acre parcel in Hermitage Exuma. It has rolling hills with sunset views. It is elevated approximately 45 feet above sea level. All utilities are available nearby. It is open zone. Great investment for a small eco-friendly hotel or a bonefish lodge. It is centrally located and is just 5 minutes from the International Airport and about 12 minutes from George Town, which is the main settlement and hub in Great Exuma. Additional beach access, marinas, major businesses, supermarkets, clinics etc. are in George Town....read more on our website.

Bedrooms: 0

Bathrooms: 0

Lot Size: 653400

Subdivision: Hermitage

Features: Acreage, Canal

Front, Central location,

Easy Access, Highway

Access, None, View -

Ocean

THE HERMITAGE/MOSS TOWN
R, Hermitage, Exuma &
Exuma Cays
Phone:



\$625.000 ID# M60732 [View Online](#)
www.sarlesrealty.com