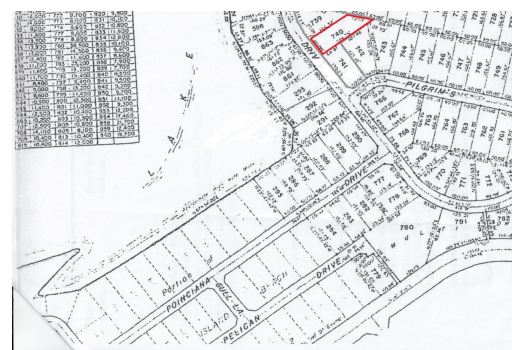


# 740 BAHAMA DRIVE, Little Exuma, Exuma &#038; Exuma C



**A single-family residential lot in the Bahama Island Beach Section 3 subdivision.**

**A short walk...**

A single-family residential lot in the Bahama Island Beach Section 3 subdivision. A short walk takes you to a lovely beach. Electricity is available to the lot. Public water supply is not available at this time. It can be supplied by drilling a well and/or a rainwater catchment. The adjacent lots 741 & 742 are also available for sale at the same price. Williamstown is the nearest settlement with 2 restaurants: Santanna's Bar & Grill, Tropic Breeze Beach Bar & Grill and Marva's Place. Distance to George Town with all amenities is a 40-minute drive....read more on our website.

Bedrooms: 0

Bathrooms: 0

Lot Size: 10341

Subdivision: Little Exuma

Features: None, View -

Ocean

740 BAHAMA DRIVE, Little

Exuma, Exuma &#038; Exuma

Cays

Phone:



**\$50,000 ID# M60690** [View Online](#)  
[www.sarlesrealty.com](http://www.sarlesrealty.com)