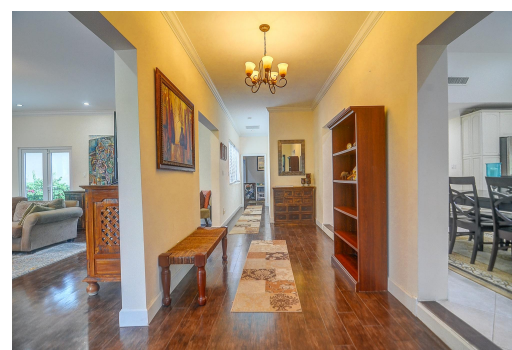


# WINTON TERRACE, Winton, New Providence/Paradise Island



**This Single family home is nestled among mature fruit and palm trees in the affluent community of...**

This Single family home is nestled among mature fruit and palm trees in the affluent community of Winton Estates. Beach access is within a short distance and the neighbourhood is quiet, with neighbours represented by persons of a professional demographic. The main house is comprised of four (4) bedrooms and three and one-half (3.5) bathrooms on a spacious lot, just under an acre. The master bedroom suite boasts of an expansive master bathroom, walk in closet, private office and treadmill room. The main house also includes a dining room, living room, entertainment room and utility room and measures 4,807 square feet. The two-storey cottage provides two additional bathrooms and sleeping accommodations comprising 640 square feet. There is an outdoor patio, patio house, outdoor bar and grill a...read more on our website.

Bedrooms: 5  
Bathrooms: 4  
Lot Size: 34912  
Subdivision: Winton  
Features: Additional  
Accom., Adult Oriented,  
Can Be Rented, Family  
Oriented, Fully Walled,  
Furnished, Garden Area,  
Landscaped, Pets  
Allowed, Phone to Lot,  
Private Setting, Quiet  
Area, Recreation Nearby,  
Road - Paved, Roll Down  
Shutters, Security  
System, Shopping  
Nearby, Swimming Pool

WINTON TERRACE, Winton,  
New Providence/Paradise Island  
Phone:



**\$1,200,000 ID# M60795** [View Online](#)  
[www.sarlesrealty.com](http://www.sarlesrealty.com)