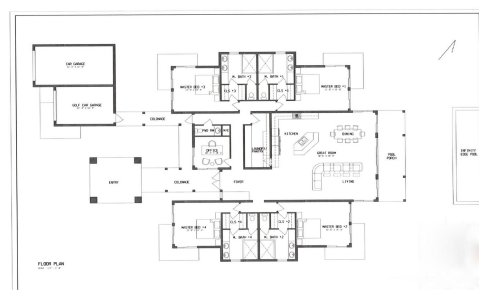
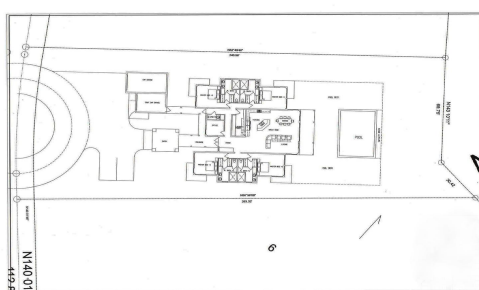
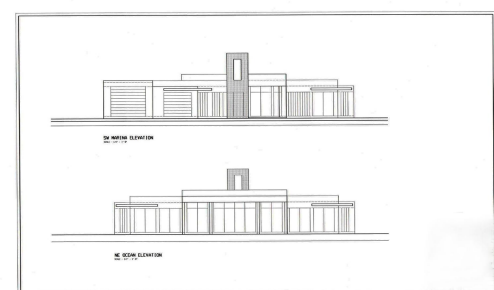


# A BEACHFRONT HOME, Emerald Bay, Exuma &#038; Exu



## Welcome to this stunning 3,300 sq. ft. luxury beachfront home in Marina Beach Estates, Emerald Bay,...

Welcome to this stunning 3,300 sq. ft. luxury beachfront home in Marina Beach Estates, Emerald Bay, Great Exuma. This custom-designed residence sits on a sea-to-sea lot with 100 feet of sandy beach and 80 feet of canal frontage, offering the best of both worlds. Take advantage of pre-construction pricing on this modern home with four spacious master suites, providing ample space for family and guests. The gourmet kitchen, open-plan living, and dining areas flow seamlessly to the infinity pool, sundeck, and turquoise ocean views. With 80 feet of dock space, this home is perfect for boating enthusiasts and ideal for short-term rentals. Located just a short walk from Grand Isle Resortâ€™s restaurants and bars, and adjacent to the Emerald Bay Marina, it offers easy access to fuel and ice. Exum...read more on our website.

Bedrooms: 4  
Bathrooms: 4  
Lot Size: 23926  
Subdivision: Emerald Bay  
Features: 24 Hour Security, Beach Front, Canal Front, Dock, Easy Access, Gated Community, Golf Course Nearby, Highway Access, Landscaped, Level Lot, Marina Nearby, Night Security, No Thru Road, Quiet Area, Recreation Nearby, Road - Paved, Southern Exp, Underground Services, View - Ocean

EXUMA BEACHFRONT HOME,  
Emerald Bay, Exuma &#038;  
Exuma Cays  
Phone:



**\$3.570,000 ID# M59775** [View Online](#)  
[www.sarlesrealty.com](http://www.sarlesrealty.com)