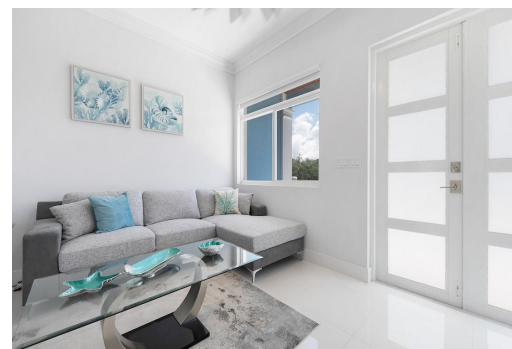
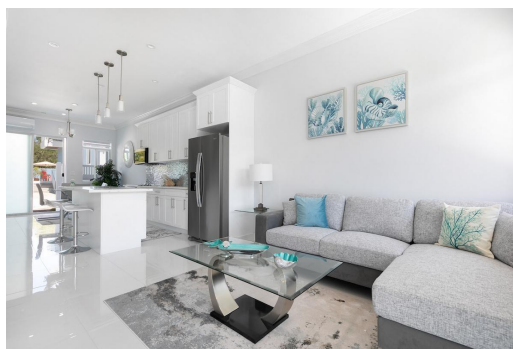


# HILLTOP ATLANTIC DR, Westridge, New Providence/Paradise



**This contemporary-styled two-bedroom condominium is just 5 minutes from the beach. This unit offers...**

This contemporary-styled two-bedroom condominium is just 5 minutes from the beach. This unit offers 1,150 sq. ft of interior space, each space is topped with modern fittings such as quartz countertops in the kitchen and stylish furniture in the bedrooms and living room. Also included is a private patio, pool, and pool house, ample parking space, and is fully enclosed and secured by security cameras. Tenants are also responsible for the utilities. Call us today to schedule a viewing!...read more on our website.

Bedrooms: 2

Bathrooms: 2

Lot Size: 21780

Subdivision: Westridge

Features: Can Be Rented,

Fully Walled, Furnished,

Highway Access,

Landscaped, Quiet Area,

Recreation Nearby, Road

- Paved, Shopping

Nearby, Swimming Pool

CAVES HILLTOP ATLANTIC DR,

Westridge, New

Providence/Paradise Island

Phone:



**\$4,000 ID# M60993** [View Online](#)  
[www.sarlesrealty.com](http://www.sarlesrealty.com)