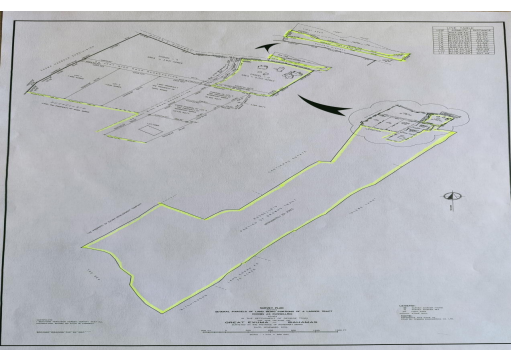
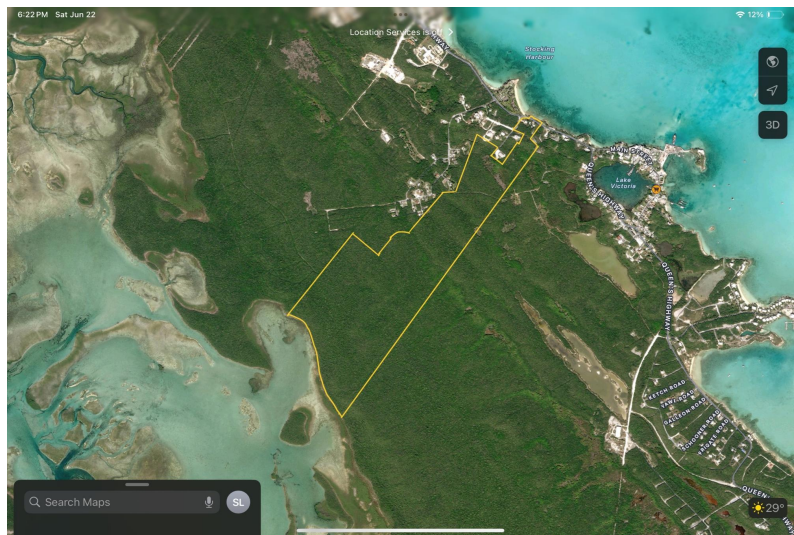
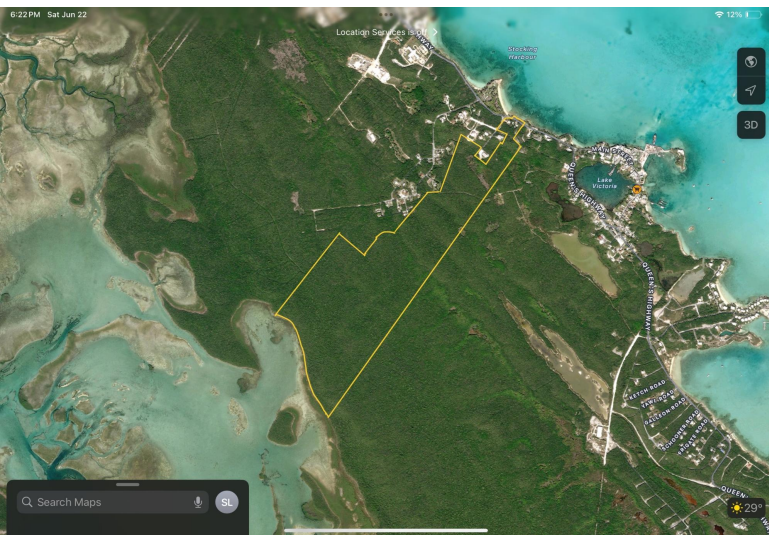


# QUEEN'S HIGHWAY, George Town, Exuma & Exuma



## An exciting new opportunity on the popular Out Island of Exuma! This expansive property boasts...

An exciting new opportunity on the popular Out Island of Exuma! This expansive property boasts almost 200 acres, offering endless possibilities for both residential and commercial development. Situated very close to George Town, this prime real estate boasts south side waterfront and easy access to in-town conveniences, creating an ideal setting for any project. This property goes from sea to sea and includes 5 renovated, income generating, cottages. With its strategic location in the middle the Bahamas and easy access via international airport, Exuma is one of the fastest growing island communities and offers a gateway to an exclusive island lifestyle characterized by warm hospitality, rich Bahamian culture, and water-based recreational activities. Smart investors will appreciate the untapped potential...read more on our website.

Bedrooms: 7

Bathrooms: 7

Lot Size: 8712000

Subdivision: George Town

Features: Furnished

QUEEN'S HIGHWAY,  
George Town, Exuma &  
Exuma Cays  
Phone:



**\$4,000,000 ID# M60785** [View Online](#)  
[www.sarlesrealty.com](http://www.sarlesrealty.com)