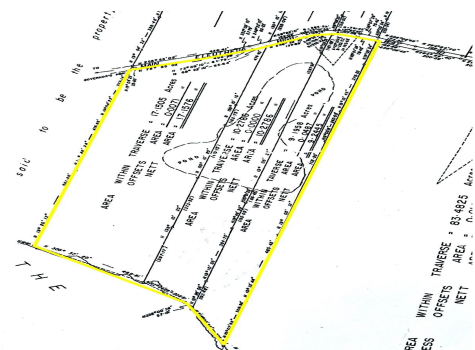


GOVERNOR'S HARBOUR, Governor's Harbour, Eleuthera



Situated one mile south of Governor's Harbour on the "Caribbean" side of the King's Highway...

Situated one mile south of Governor's Harbour on the "Caribbean" side of the King's Highway this 36.68 acre tract has elevations up to 50 feet. Property is ideally situated for land development with spectacular sea views, elevations and a rocky shoreline frontage with an approximate depth of 5 feet in high tide. There is an adjacent 36.68 acre waterfront tract to the south for sale. All utilities are on the Highway. Eleuthera is situated approximately 50 miles east of Nassau at its nearest point. It was settled in 1648 by the Eleutheran Adventurers "a band of English Puritans who left Bermuda in search of religious freedom. They named the island Eleuthera, which means Freedom (Eleftheria in Greek). The Adventurers founded what was probably the first democracy in the western world...read more on our website.

Bedrooms: 0
Bathrooms: 0
Lot Size: 1597781
Subdivision: Governor's Harbour
Features: Acreage,
Highway Access, None,
Road - Paved, Rocky
Shore, Shopping Nearby,
View - Ocean, Waterfront
- Ocean, Wooded Area

GOVERNOR'S
HARBOUR, Governor's
Harbour, Eleuthera
Phone:



\$1.720,000 ID# M61091 [View Online](#)
www.sarlesrealty.com