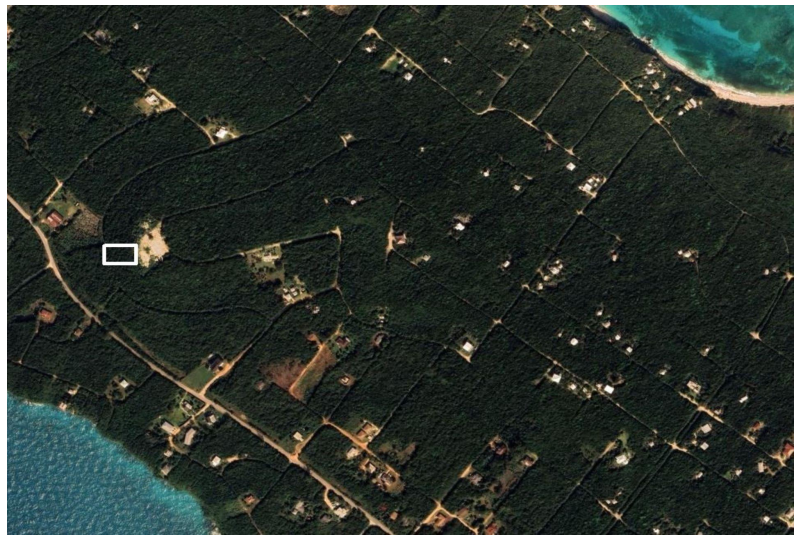
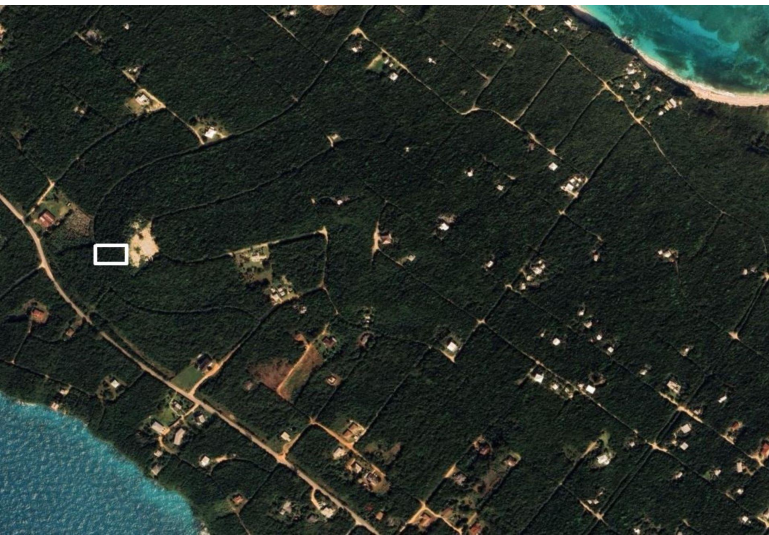


# ELEUTHERA ISLAND SHORES, Gregory Town, Eleuthera



## Hilltop lot provides a private sanctuary with potential views of the calm side of Eleuthera....

Hilltop lot provides a private sanctuary with potential views of the calm side of Eleuthera. Situated within the unique community of Eleuthera Island Shores, home of the world-famous Surfer's Beach. Embrace the convenience of being in close proximity to the charming town of Gregory Town, home of the Pineapple Fest. Additionally, the North Eleuthera International Airport, Harbour Island, and Spanish Wells are all just a short distance away, offering even more opportunities for exploration and convenience. A great place to begin your Eleutheran Adventure!...read more on our website.

Bedrooms: 0

Bathrooms: 0

Lot Size: 9600

Subdivision: Gregory Town

Features: Easy Access, Family Oriented, Highway Access, None, Pets Allowed, Quiet Area, Treed Lot

ELEUTHERA ISLAND SHORES,  
Gregory Town, Eleuthera  
Phone:



**\$27,500 ID# M61731** [View Online](#)  
[www.sarlesrealty.com](http://www.sarlesrealty.com)