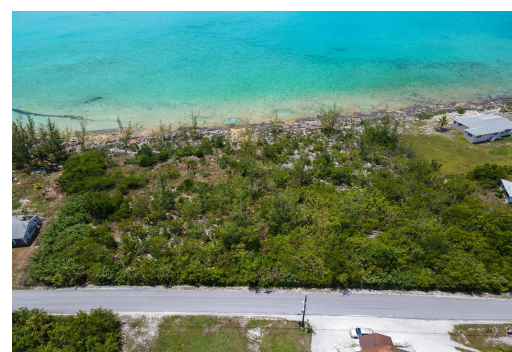
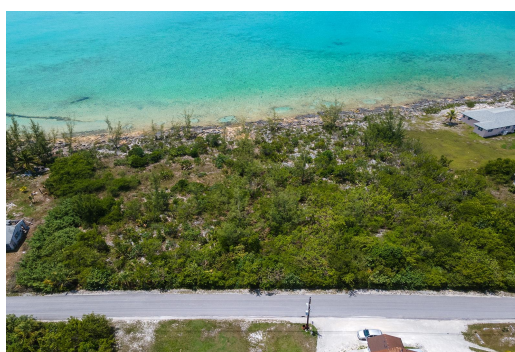


# PARCEL B DOCTORS CREEK, Doctor's Creek, Long Island



## Not one, but two Waterfront lots sitting side by side with great elevations overlooking the...

Not one, but two Waterfront lots sitting side by side with great elevations overlooking the turquoise waters of Long Island. Enjoy stunning sunsets from the properties that face west overlooking the Bahama Banks. Lots A & B extend from Queens Highway to the water with a combined acreage of 63,792 square feet. One can if you wish fish, swim, and or snorkeling just off the shoreline. Each lot is offered for sale separately; however, they can be purchased together to form a large estate lot for a spacious vacation home. Long Island is a tranquil island paradise offering a quite relaxing atmosphere perfect for that getaway with family and friends. The island also offers some of the best bone fishing and diving in The Bahamas. Long Island is known for the famous "Deans Blue Hole" a site well kn...read more on our website.

Bedrooms: 0  
Bathrooms: 0  
Lot Size: 31900  
Subdivision: Doctor's  
Creek  
Features: None, Rocky  
Shore, Waterfront -  
Ocean

PARCEL B DOCTORS CREEK,  
Doctor's Creek, Long  
Island  
Phone:



**\$75,000 ID# M61584** [View Online](#)  
[www.sarlesrealty.com](http://www.sarlesrealty.com)