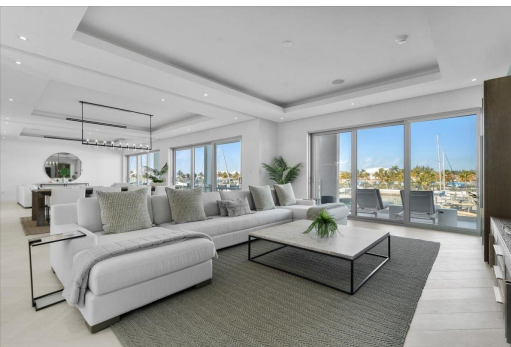


ONE MARINA, Yamacraw, New Providence/Paradise Island



Experience waterfront living at its finest in this beautiful waterfront condo that has been...

Experience waterfront living at its finest in this beautiful waterfront condo that has been designed to achieve the perfect blend of coastal living with upscale entertaining. Features include an open living area that flows effortlessly on to a covered terrace, spacious kitchen with top of the line appliances, beautiful master suite with walk in closet and en suite bathroom with soaking tub and separate shower, two well appointed guest bedrooms with ensuite bathrooms and walk in closets, spacious laundry room with ample storage. Professionally furnished in a modern coastal style with Restoration Hardware furnishings, beautiful porcelain plank flooring, automated window coverings and a smart home entertainment system. Palm Cay is a luxury private oceanfront community with exclusive access to...read more on our website.

Bedrooms: 3
Bathrooms: 3
Lot Size: 0
Subdivision: Yamacraw
Features: 24 Hour Security, Canal Front, Dock, Furnished, Gated Community, Hurricane Windows, Impact Windows, Marina Nearby, Pets Allowed, Recreation Nearby, Shopping Nearby, Short Term Allowed, View - Ocean, Water Purifier, Waterfront - Ocean

ONE MARINA, Yamacraw, New Providence/Paradise Island
Phone:



\$2.600,000 ID# M62000 [View Online](#)
www.sarlesrealty.com