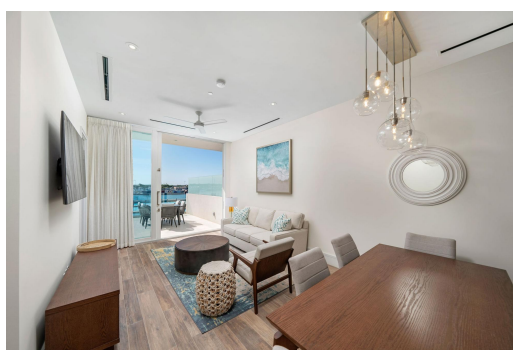


# STERLING COMMONS, Paradise Island, New Providence/Paradise Island



## Indulge in awe-inspiring vistas of the Hurricane Hole Superyacht Marina and Nassau Harbour from...

Indulge in awe-inspiring vistas of the Hurricane Hole Superyacht Marina and Nassau Harbour from this contemporary two-bedroom, two-bathroom penthouse situated within Sterling Commons at Paradise Landing. Boasting modern elegance and island allure, this freshly built, tastefully furnished unit on the penthouse floor epitomizes luxury living. From top-of-the-line appliances to quartz countertops, every detail exudes quality and style. Enjoy the convenience of central air conditioning, laundry facilities, and hurricane-rated doors leading to a spacious private balcony, perfect for soaking in the stunning views. Nestled within Paradise Island's premier luxury condominium community, Sterling Commons offers residents access to a dynamic lifestyle centered around a state-of-the-art super yacht ...read more on our website.

Bedrooms: 2

Bathrooms: 2

Lot Size: 1356

Subdivision: Paradise Island

Features: 24 Hour

Security, Beach Front, Can Be Rented, Family

Oriented, Furnished, Gated Community,

Harbour, Impact

Windows, Kitchen

Built-in(s), Landscaped,

Main Level Entry, Marina

Nearby, Quiet Area,

Recreation Nearby, Road

- Paved, Shopping

Nearby, Stand-by

Generator, Swimming

Pool, View - Ocean,

Waterfront - Ocean

STERLING COMMONS, Paradise Island, New Providence/Paradise Island

Island

Phone:



**\$6.500 ID# M61622** [View Online](#)  
[www.sarlesrealty.com](http://www.sarlesrealty.com)