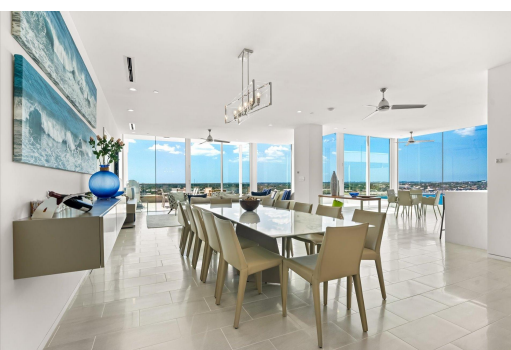


HOUSE ONE OCEAN, Paradise Island, New Providence/Paradise



One Ocean boasts a prime location on Nassau Harbour, nestled between Ocean Club Estates and Four...

One Ocean boasts a prime location on Nassau Harbour, nestled between Ocean Club Estates and Four Seasons Ocean Club. As the tallest residential building on Paradise Island, it features 79 elevated apartments, each with private elevator access, underground parking, 24-hour security, an elegant lobby, and a private swimming pool and gym. This fully furnished penthouse offers breathtaking views over the harbor, complemented by expansive outdoor living spaces that showcase panoramic ocean vistas. Various restaurants, shopping, nightlife, and beautiful beaches are just a short stroll away. The penthouse encompasses 4 bedrooms and 4.5 bathrooms spread across two levels with high-end finishes. Highlights include 8-foot high solid wood interior doors made in Germany, luxurious European kitchens wi...read more on our website.

Bedrooms: 4
Bathrooms: 4
Lot Size: 87120
Subdivision: Paradise Island
Features: 24 Hour Security, Cable, Furnished, Gated Community, Harbour, Impact Windows, Landscaped, Main Level Entry, Marina Nearby, Pets Allowed, Quiet Area, Recreation Nearby, Road - Paved, Shopping Nearby, Stand-by Generator, Swimming Pool, View - Ocean, Waterfront - Ocean

PENTHOUSE ONE OCEAN,
Paradise Island, New
Providence/Paradise Island
Phone:



\$4,500,000 ID# M61658 [View Online](#)
www.sarlesrealty.com