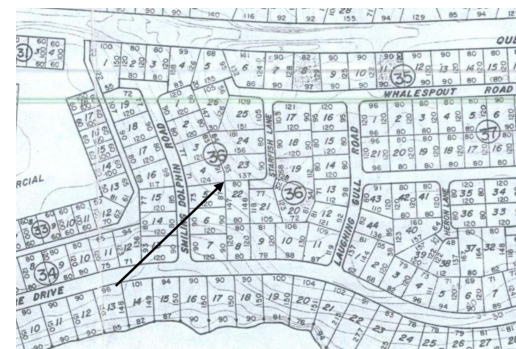


STARFISH LANE RAINBOW BAY, Rainbow Bay, Eleuthera



Expansive Residential Lot in Rainbow Bay. Ideal for Your Dream Home or Investment Property! Nestled...

Expansive Residential Lot in Rainbow Bay. Ideal for Your Dream Home or Investment Property! Nestled in a quiet cul-de-sac off Wandering Shore Drive, this oversized residential lot offers a peaceful retreat on the calm bight side of Rainbow Bay, North Eleuthera. With elevations reaching up to 80 feet, a home built here is likely to enjoy breathtaking sea views. Power is available approximately 200 feet away, and annual HOA fees are just \$100 for undeveloped lots and \$250 for developed lots, annually. Whether you are looking to build a permanent residence, a vacation getaway, or a high-demand Airbnb rental, this lot presents an excellent opportunity. Rainbow Bay is a sought-after, centrally located community, offering easy access to multiple pristine beaches, walking and jogging paths, pickl...read more on our website.

Bedrooms: 0
Bathrooms: 0
Lot Size: 13405
Subdivision: Rainbow Bay
Features: Family Oriented,
Highway Access, Hillside,
None, Pets Allowed,
Quiet Area, Road -
Paved, Treed Lot, View -
Ocean

STARFISH LANE RAINBOW
BAY, Rainbow Bay, Eleuthera

Phone:



\$58,000 ID# M61666 [View Online](#)
www.sarlesrealty.com