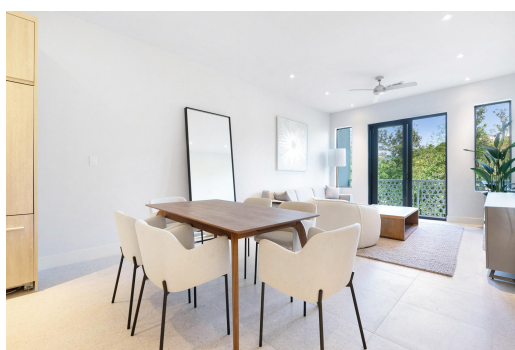
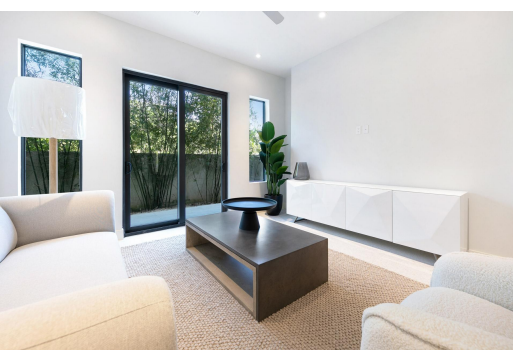


# WESTEND, Love Beach, New Providence/Paradise Island



## Experience modern comfort and convenience at Westend! This newly constructed ground floor...

Experience modern comfort and convenience at Westend! This newly constructed ground floor 3-bedroom, 2-bathroom unit is being offered fully furnished and consists of 1,450 square feet of living space. Nestled within the sought-after Westend development, privacy and tranquility await you—step inside this well-crafted unit, where attention to detail shines through. Westend caters to your lifestyle with two inviting swimming pools for relaxation, a private gym for your fitness routine, and 24-hour security for peace of mind. The on-site staff ensures property maintenance, while the generator hookup and impact-resistant windows and doors add convenience and safety during unforeseen events. Westend is ideally located within 5-10 minutes of prestigious schools, supermarkets for your shopping n...read more on our website.

Bedrooms: 3  
Bathrooms: 2  
Lot Size: 217800  
Subdivision: Love Beach  
Features: 24 Hour Security, Acreage, Family Oriented, Furnished, Gated Community, Highway Access, Landscaped, Pets Allowed, Recreation Nearby, Road - Paved, Shopping Nearby, Stand-by Generator, Swimming Pool

WESTEND, Love Beach, New Providence/Paradise Island  
Phone:



**\$700.000 ID# M61605** [View Online](#)  
[www.sarlesrealty.com](http://www.sarlesrealty.com)