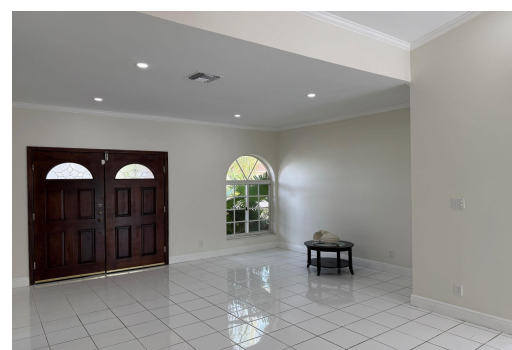


DIAMOND CLOSE, Yamacraw, New Providence/Paradise Is



This charming house Located in the highly sought-after Treasure Cove Gated Community in the Eastern...

This charming house Located in the highly sought-after Treasure Cove Gated Community in the Eastern District. This beautifully well maintained 3-bedroom, 2-bathroom home offers the perfect blend of comfort, style, and convenience. Spanning 1,590 sq. ft., this residence features an open floor plan creating a seamless flow between the living, dining, and kitchen area. The kitchen is a chef's dream, boasting granite countertops, custom wood cabinetry, and recessed lighting. The bedrooms offer warmth and elegance with wood- flooring, while ceramic tile flooring runs throughout the rest of the home. Utility room offers a full-size washer, dryer, and utility tub. This provides central air conditioning, a private yard with a pool, deck, built-in storage, backup generator. To maintain the lush la...read more on our website.

Bedrooms: 3
Bathrooms: 2
Lot Size: 6100
Subdivision: Yamacraw
Features: 24 Hour Security, Easy Access, Family Oriented, Fully Fenced, Garden Area, Kitchen Built-in(s), Landscaped, Pets Allowed, Quiet Area, Recreation Nearby, Road - Paved, Shopping Nearby, Sprinkler System, Stand-by Generator

239 DIAMOND CLOSE,
Yamacraw, New
Providence/Paradise Island
Phone:



\$550.000 ID# M61827 View Online
www.sarlesrealty.com