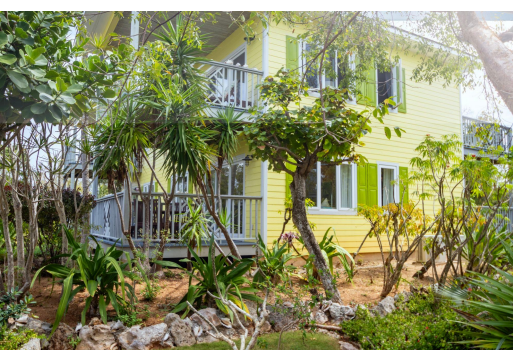


GARDEN VIEW UNIT 301, Governor's Harbour, Eleuthera



Pineapple Fields Unit 301 is a charming one-bedroom, one-bath ground-floor condominium located in...

Pineapple Fields Unit 301 is a charming one-bedroom, one-bath ground-floor condominium located in the heart of Eleuthera's Golden Mile, just steps from one of the most beautiful beaches in The Bahamas. Set on five acres of lush, landscaped gardens, Pineapple Fields offers the perfect blend of comfort and convenience, with eight well-designed buildings surrounding an oversized kidney-shaped pool. This fully furnished unit features a spacious master bedroom, a bright living area, and front and back verandahs with elegant teak furniture. The kitchen is equipped with solid maple cabinets, granite countertops, and modern appliances, while the large master bathroom includes marble vanities. A stackable washer and dryer add to the convenience. Pineapple Fields offers the best of both worlds—the...read more on our website.

Bedrooms: 1
Bathrooms: 1
Lot Size: 1
Subdivision: Governor's Harbour
Features: Cable, Furnished, Garden Area, Hurricane Windows, Kitchen Built-in(s), Main Level Entry, Stand-by Generator, Swimming Pool

GARDEN VIEW UNIT 301,
Governor's Harbour,
Eleuthera
Phone:



\$280,000 ID# M61018 [View Online](#)
www.sarlesrealty.com