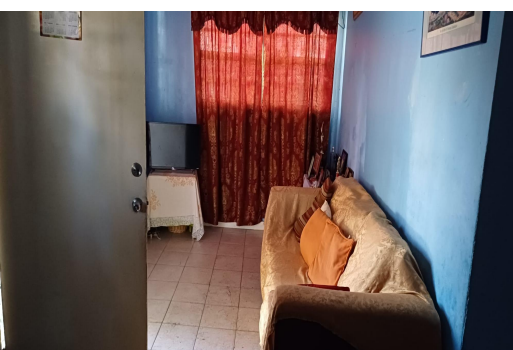


WOODES STREET, Blue Hill Road, New Providence/Paradise Is



Nestled in the conveniently located community of Ridgeland Park West, this charming 3-bedroom,...

Nestled in the conveniently located community of Ridgeland Park West, this charming 3-bedroom, 1-bathroom home offers the perfect blend of comfort and accessibility. Just a short stroll from the main Robinson Road, Ridgeland Primary School, a major food store and a variety of commercial outlets. This home ensures you™re never far from essential amenities. Inside, you'll find an open living and dining area, a cozy kitchen and comfortable bedrooms. The property also boasts ample yard space on all sides, providing plenty of room for outdoor activities or future improvements. With its prime location and great potential, this home is an excellent opportunity for first-time buyers or anyone looking to invest in a centrally located, well-connected neighborhood. Don™t miss out on this gem!...read more on our website.

Bedrooms: 3

Bathrooms: 1

Lot Size: 4200

Subdivision: Blue Hill
Road

Features: Can Be Rented,
Central location, Easy
Access, Family Oriented,
None

WOODES STREET, Blue Hill
Road, New Providence/Paradise
Island
Phone:



\$125.000 ID# M61924 [View Online](#)
www.sarlesrealty.com