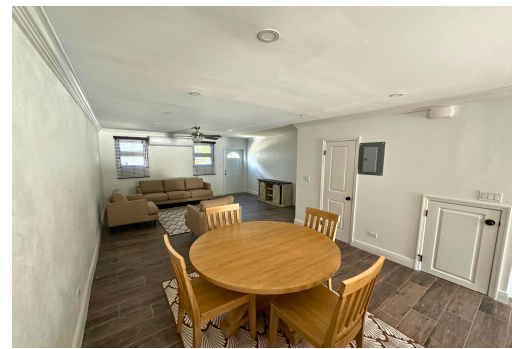


# LOCHRIDGE, Prospect Ridge, New Providence/Paradise Island



## Welcome to Lochridge, a gated community in Prospect Ridge with only 8 units! This newly built...

Welcome to Lochridge, a gated community in Prospect Ridge with only 8 units! This newly built 2-bedroom, 2.5-bathroom townhouse, completed in 2024, offers 1,280 sq.ft. of modern living space. The open-concept design seamlessly connects the living, dining and kitchen areas, creating a stylish and functional layout. Upstairs, both bedrooms feature queen beds and are cooled by central AC, while a ductless unit keeps the downstairs comfortable. The townhouse comes partially furnished, allowing you to personalize the space and includes a washer and dryer for added convenience. Located just 10 minutes from the airport and 5 minutes from Baha Mar, Lochridge offers easy access to top dining, shopping and entertainment. Residents enjoy a gated entrance/exit and a shared pool, enhancing the convenie...read more on our website.

Bedrooms: 2

Bathrooms: 2

Lot Size: 0

Subdivision: Prospect Ridge

LOCHRIDGE, Prospect Ridge,  
New Providence/Paradise Island

Phone:

Features: Central location,  
Golf Course Nearby,  
Partial Furnished, Pets  
Allowed, Shopping  
Nearby, Swimming Pool



**\$3,000 ID# M61512** [View Online](#)  
[www.sarlesrealty.com](http://www.sarlesrealty.com)