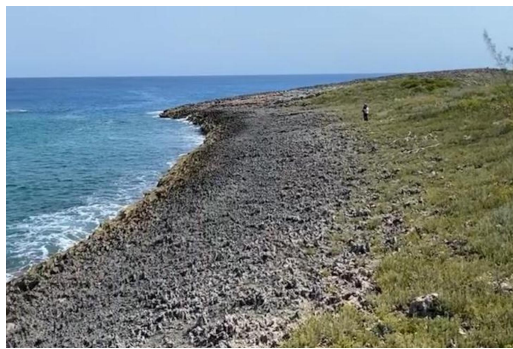
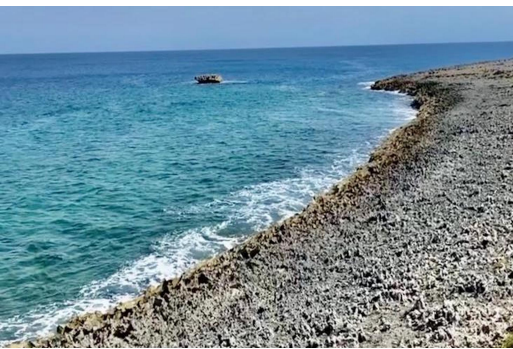


LOT 22, RAINBOW BAY, Rainbow Bay, Eleuthera



This oceanfront spans 10,800 sq ft (0.25 acres) offering stunning views of the Atlantic Ocean and...

This oceanfront spans 10,800 sq ft (0.25 acres) offering stunning views of the Atlantic Ocean and breathtaking sunrises. Located in Eleuthera, this property is close to beautiful beaches and is part of a vibrant residential community, the lot is located behind Fisherman's Point in Rainbow Bay. The development offers multiple beaches, boat ramp, tennis courts, kayak storage, restaurant, and the Rainbow Bay Inn for additional guests if need be. The development is situated in between the Caribbean and Atlantic. The main beach is located on the Caribbean side with umbrellas, tables, and kayak storage. This community is in a convenient area with nearby grocery stores and other amenities for your comfort. The Governors Harbour Airport (GHB) is only a 15-minute drive south and the North Eleuth...read more on our website.

Bedrooms: 0
Bathrooms: 0
Lot Size: 10800
Subdivision: Rainbow Bay
Features: None, Quiet Area, Treed Lot, View - Ocean, Waterfront - Ocean

LOT 22, RAINBOW BAY,
Rainbow Bay, Eleuthera
Phone:



\$105.000 ID# M60610 [View Online](#)
www.sarlesrealty.com