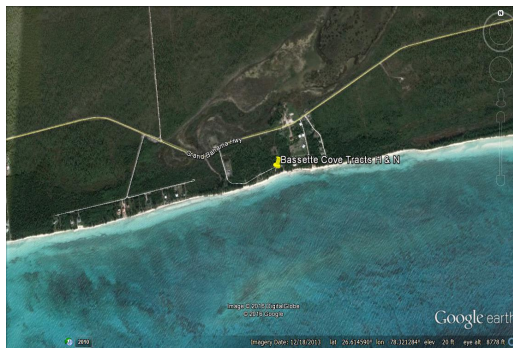


Bassette Cove Beachfront Land



TWO LOTS - Bassette Cove Spectacular Beachfront Land

This spectacular beach front property is on one of the finest beaches on the island located in the East End of Grand Bahama.

This area has open zoning. Tract H and N measure at 24,179 sq ft and offer 150 feet on the beach with spectacular views!

...read more on our website.

Lot Size: 24,179 sq ft
Maint. Fees: -
Features: Beach access,
Ocean front
Open Zoning
150 feet on the Beach



James Sarles

Phone: (242) 351-9081

jamesarlesrealty@gmail.com



COLDWELL BANKER
JAMES SARLES
REALTY

\$305,000 ID# 25873 [View Online](#)
www.sarlesrealty.com

Ph: (242) 351-9081 | Web: www.sarlesrealty.com