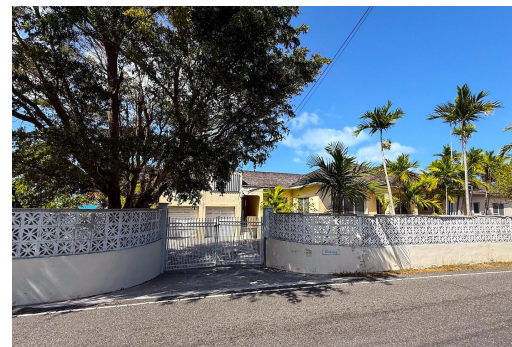


# WINDSONG, EASTERN ROAD, Eastern Road, New Providence/Paradise Island



## Prime Waterfront Development Opportunity â€œ Eastern Road Discover the potential of Windsong, a...

Prime Waterfront Development Opportunity â€œ Eastern Road Discover the potential of Windsong, a rare waterfront property in the prestigious Eastern Road district of New Providence. Spanning 21,009 sq. ft., this developed lot boasts 225 feet of ocean frontage, offering breathtaking views and direct access to the sea. The property features a spacious main house measuring 3,929 sq. ft., complemented by a 3,021 sq. ft. basement, providing ample space for a variety of uses. With 226 feet of road frontage, the property ensures easy accessibility while maintaining privacy. Its prime location, just east of Sans Souci and west of Dodge Road, offers convenience while preserving a serene coastal setting. Whether you envision a stunning private estate or explore development possibilities, Windsong pre...read more on our website.

Bedrooms: 3

Bathrooms: 3

Lot Size: 21009

Subdivision: Eastern Road

Features: Easy Access,

Family Oriented, Highway

Access, None, Quiet

Area, Road - Paved,

Treed Lot, View - Ocean,

Waterfront - Ocean

WINDSONG, EASTERN ROAD,

Eastern Road, New

Providence/Paradise Island

Phone:



**\$1.750,000 ID# M61797** [View Online](#)  
[www.sarlesrealty.com](http://www.sarlesrealty.com)