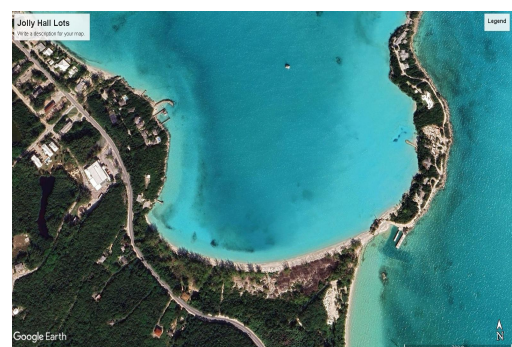
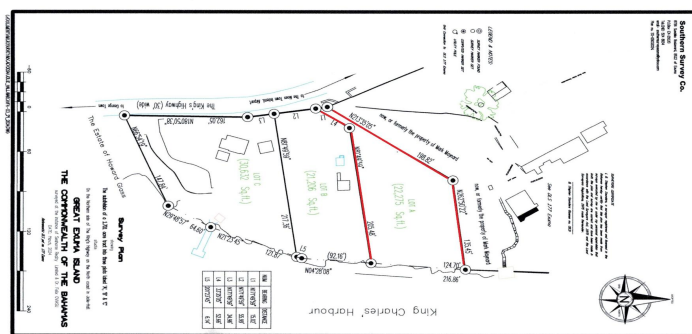
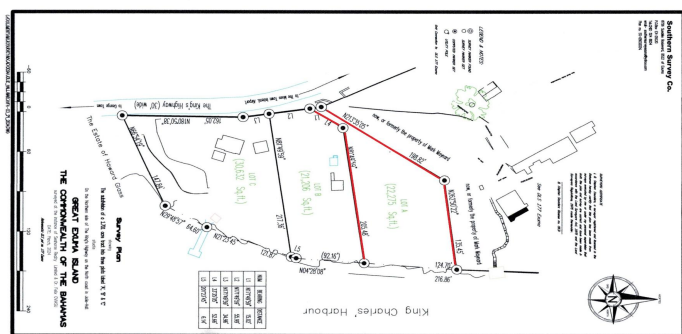


JOLLY HALL, Jolly Hall, Exuma & Exuma Cays



A parcel of land with an area of 22,275 Sq. Ft. and with 410 feet of rocky shoreline, and 268 feet...

A parcel of land with an area of 22,275 Sq. Ft. and with 410 feet of rocky shoreline, and 268 feet on the Queens Highway in the Jolly Hall area close to George Town. The land is best suited to residential development. George Town is the capital of the Exumas and where most amenities are located: Government Building with Post Office, Police Station and Administrator's office. Hotels, restaurants & bars, car and scooter rentals, water taxi, marina and boutiques....read more on our website.

Bedrooms: 0
Bathrooms: 0
Lot Size: 22275
Subdivision: Jolly Hall
Features: None

JOLLY HALL, Jolly Hall, Exuma
& Exuma Cays
Phone:



\$1,400,000 ID# M62071 [View Online](#)
www.sarlesrealty.com