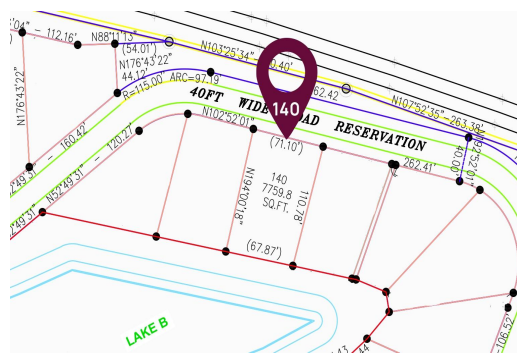
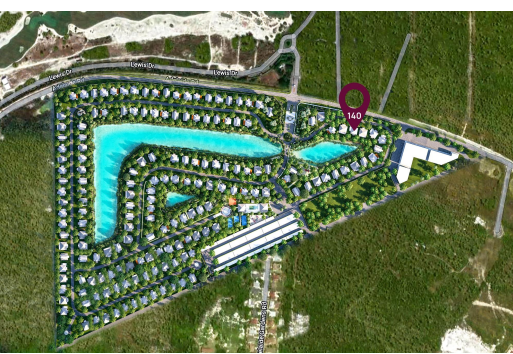


WINDSOR LAKES SUBDIVISION, Adelaide, New Providence/Paradise Island



Welcome to Lot 140 in Windsor Lakes, a brand-new residential community nestled off Adelaide Road in...

Welcome to Lot 140 in Windsor Lakes, a brand-new residential community nestled off Adelaide Road in western New Providence. This spacious lot offers an ideal setting for your dream home, blending tranquil lakefront living with the convenience of city amenities. Windsor Lakes is designed for modern island lifestyles, featuring landscaped green spaces, community parks, and 24-hour security. Enjoy proximity to top schools, shopping, beaches, and the airport while being tucked away in a peaceful, family-friendly neighborhood. Secure your spot in this growing community and build the life you've envisioned in one of Nassau's most desirable locations. With strong demand for quality housing in western New Providence, Lot 140 also presents an excellent investment opportunity. Whether you're b...

Bedrooms: 0
Bathrooms: 0
Lot Size: 7760
Subdivision: Adelaide
Features: 24 Hour Security, Adult Oriented, Family Oriented, Fully Walled, Garden Area, Gated Community, Golf Course Nearby, Night Security, Waterfront - Lake, Wooded Area

WINDSOR LAKES
SUBDIVISION, Adelaide, New
Providence/Paradise Island
Phone:



\$386.250 ID# M62294 [View Online](#)
www.sarlesrealty.com