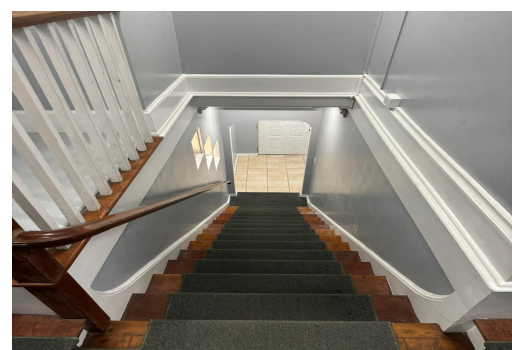


# ELIZABETH AVENUE, Downtown, New Providence/Paradise Island



## Ideal for Modern Living This newly renovated 737 sq ft, 3rd-level residential unit offers the...

Ideal for Modern Living This newly renovated 737 sq ft, 3rd-level residential unit offers the perfect blend of comfort and convenience in the heart of downtown Nassau. The layout features 2 spacious bedrooms, 1 full bathroom, a cozy living area, and a well-equipped kitchenette. Enjoy modern finishes throughout, including new fixtures, updated countertops, stylish flooring, and energy-efficient LED lighting. The unit is designed for safety and peace of mind with hurricane impact windows, video access security, 24/7 fire monitoring, and access to a standby generator. Located just steps from downtown attractions and local hospitals, this home is perfectly situated for those seeking a vibrant yet accessible lifestyle. On-site property management ensures all your needs are met. Parking is avail...read more on our website.

Bedrooms: 2  
Bathrooms: 1  
Lot Size: 737  
Subdivision: Downtown  
Features: Fully Fenced,  
Fully Walled, Kitchen  
Built-in(s), Partial  
Furnished, Shopping  
Nearby, Stand-by  
Generator, Unfurnished

ELIZABETH AVENUE,  
Downtown, New  
Providence/Paradise Island  
Phone:



**\$2,500 ID# M60528** [View Online](#)  
[www.sarlesrealty.com](http://www.sarlesrealty.com)