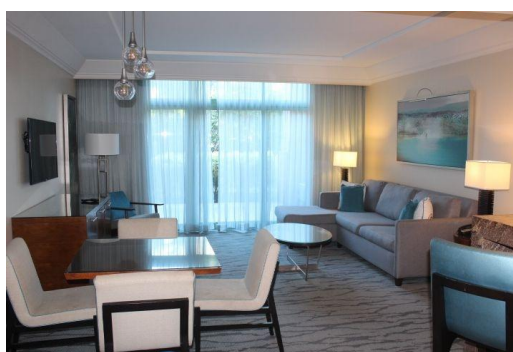


# REEF AT ATLANTIS, Paradise Island, New Providence/Paradise



## The Reef Atlantis | Unit 21-916 Studio | 523 sq. ft. (Interior) Set high above cabbage beach with...

The Reef Atlantis | Unit 21-916 Studio | 523 sq. ft. (Interior) Set high above cabbage beach with sweeping views of the ocean and resort grounds, this beautifully appointed studio residence at The Reef offers the perfect blend of luxury and convenience. Featuring a king bed, a comfortable living area, and a well-equipped kitchenette, this turnkey unit is designed for both personal enjoyment and rental income. Owners at The Reef enjoy 90 days of personal use per year, with the unit seamlessly integrated into the Atlantis rental program the rest of the time—generating effortless income. The property is fully furnished with refined finishes, and includes an expansive ensuite bathroom and a private balcony with stunning panoramic views. As an owner, you™ll have exclusive access to a privat...read more on our website.

Bedrooms: 1  
Bathrooms: 1  
Lot Size: 523  
Subdivision: Paradise Island  
Features: 24 Hour Security, Furnished, Hurricane Windows, Jetted Bathtub, Stand-by Generator, Swimming Pool

THE REEF AT ATLANTIS,  
Paradise Island, New  
Providence/Paradise Island  
Phone:



**\$485.000 ID# M62292** [View Online](#)  
[www.sarlesrealty.com](http://www.sarlesrealty.com)