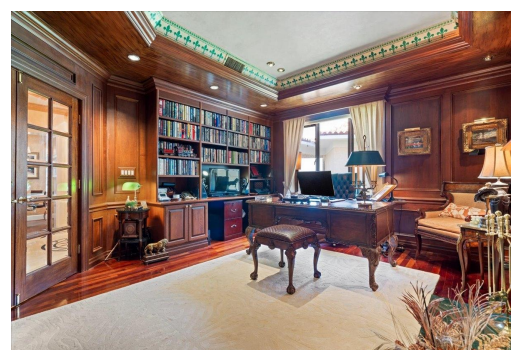


# CLOISTER DRIVE EAST, Paradise Island, New Providence/Paradise



**This rare-to-market, two story, penthouse has been completely renovated and exceptionally...**

This rare-to-market, two story, penthouse has been completely renovated and exceptionally maintained. The expansive home covers over 3,100sqft of interior area with another 250sqft balcony with ocean views. The home features 3 en-suite bedrooms, a large study, and a multipurpose entertaining area with a bar and pool table. Marble floors, hand painted decorative ceilings and trims, custom furniture and millwork, upgraded lighting, outdoor kitchen & bbq, and top-of-the-line AV equipment are just a few of the many notable upgrades done to and included with the unit. The sale includes a car, a golf cart, 2 covered and 1 uncovered carpark, and an air-conditioned storage unit, with an additional optional rental unit. The development features a large resort-style pool and garden as well as a gym....read more on our website.

Bedrooms: 3  
Bathrooms: 4  
Lot Size: 3350  
Subdivision: Paradise Island  
Features: 24 Hour Security, Fully Walled, Furnished, Hurricane Windows, Impact Shutters, Main Level Entry, Night Security, Stand-by Generator, Swimming Pool

CLOISTER DRIVE EAST,  
Paradise Island, New  
Providence/Paradise Island

Phone:



**\$2.795,000 ID# M62395 [View Online](#)**  
**[www.sarlesrealty.com](http://www.sarlesrealty.com)**