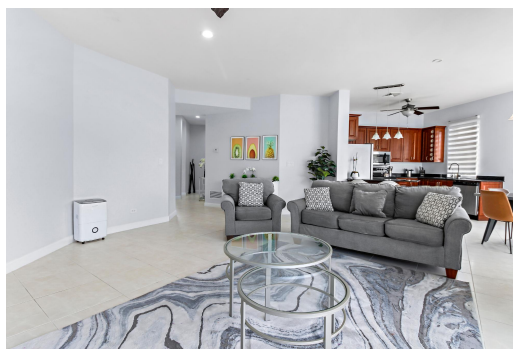


# LOVE BEACH WALK, Love Beach, New Providence/Paradise Island



## Love Beach Walk Unit #5 was recently remodelled and modernized to make use of the very open floor...

Love Beach Walk Unit #5 was recently remodelled and modernized to make use of the very open floor plan. This elevated 1,729 Sqft. condominium gets a ton of natural light and breathtaking views as it overlooks the beautiful Love Beach. The unit is affixed with brand new appliances including a stackable washer/ dryer, two balconies overlooking the ocean/ pool, one being a very spacious wrap-around from the dining room to the master bedroom, and a two-car port. The surrounding area consists of top-tier resorts, fine dining, shopping and is just minutes away from the International Airport....read more on our website.

Bedrooms: 3  
Bathrooms: 3  
Lot Size: 1729  
Subdivision: Love Beach  
Features: 24 Hour Security, Adult Oriented, Can Be Rented, Cul-de-sac, Family Oriented, Fully Fenced, Fully Walled, Gated Community, Impact Shutters, Impact Windows, Landscaped, Quiet Area, Recreation Nearby, Roll Down Shutters, Shopping Nearby, Sprinkler System, Swimming Pool, View - Ocean

LOVE BEACH WALK, Love Beach, New Providence/Paradise Island  
Phone:



**\$5,000 ID# M62337** [View Online](#)  
[www.sarlesrealty.com](http://www.sarlesrealty.com)