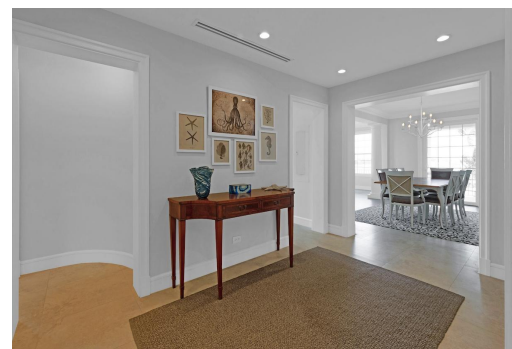


# SHANGRI-LA, Paradise Island, New Providence/Paradise Island



## Remodeled luxury condo at Shangri-La on Paradise Island, includes a 80' dock space in a...

Remodeled luxury condo at Shangri-La on Paradise Island, includes a 80' dock space in a protected marina! Mediterranean in design, Shangri-La enjoys a prime harbourfront location and features a large signature swimming pool with palm tree filled island and hot tub, two car covered parking in a gated courtyard, full-service generator, AC storage and a newly constructed dock with marina dredged to 8' MLLW. An extensive wrap around balcony, arched portico and windows on four sides provide for stunning ocean vistas and southeasterly breezes. Wolf and Sub-Zero appliances complement the contemporary kitchen design with pure white countertops and marble backsplash. The master wing with ensuite bathroom features a spacious rain shower, soaking tub, double vanity and water closet. Fully furnished, ...read more on our website.

Bedrooms: 3

Bathrooms: 4

Lot Size: 0

Subdivision: Paradise Island

SHANGRI-LA, Paradise Island,  
New Providence/Paradise Island

Phone:

Features: Dock, Fully  
Walled, Gated  
Community, Hot Tub,  
Impact Shutters, Impact  
Windows, Marina Nearby,  
Private Setting, Southern  
Exp, Stand-by Generator,  
Swimming Pool,  
Waterfront - Ocean



**\$2.600,000 ID# M62396** [View Online](#)  
[www.sarlesrealty.com](http://www.sarlesrealty.com)