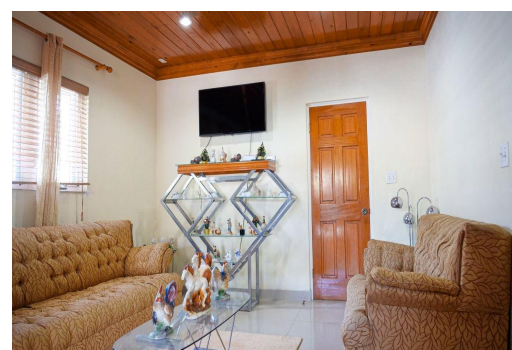
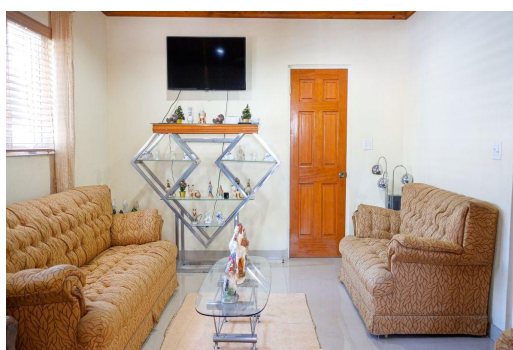


DSTONE ROAD, Gladstone Road, New Providence/Paradise



Situated in the peaceful enclave of Seawell Manor off Gladstone Road, Lot 26 is a thoughtfully...

Situated in the peaceful enclave of Seawell Manor off Gladstone Road, Lot 26 is a thoughtfully updated split-level single-family home that delivers space, comfort, and practical living. Featuring 3 bedrooms and 3.5 bathrooms, the home is designed with functionality in mind—each bedroom includes an expansive walk-in closet, while the renovated kitchen, central air conditioning, dedicated laundry area with washer and dryer, and multiple storage options add to the home's everyday ease. Hurricane impact windows provide security and efficiency, and the exterior is enhanced by mature fruit trees and a modest farm space for sustainable living. This well-maintained residence offers a move-in-ready opportunity for buyers seeking a solid home in a quiet, established neighborhood....read more on our website.

Bedrooms: 3

Bathrooms: 3

Lot Size: 8000

Subdivision: Gladstone Road

GLADSTONE ROAD, Gladstone Road, New Providence/Paradise

Features: Family Oriented,

Furnished, Garden Area,

Hot Tub, Hurricane

Windows, Impact

Windows, Jetted Bathtub,

Kitchen Built-in(s),

Landscaped, Low Maint

Yard, Pets Allowed, Quiet

Area, Road - Paved,

Security System, Treed

Lot

Island

Phone:



\$600.000 ID# M62749 [View Online](#)
www.sarlesrealty.com