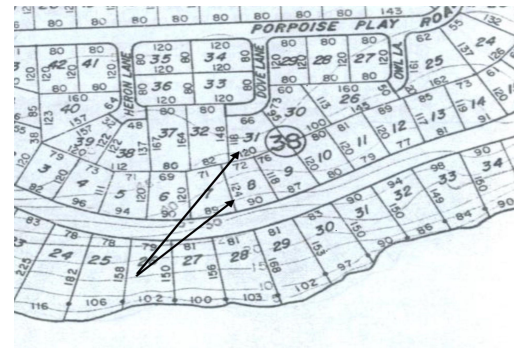


# 8 WANDERING SHORE, Rainbow Bay, Eleuthera



## Rare Double Lot with Sweeping Sea Views, with access from both Wandering Shore Drive and Dove Lane....

Rare Double Lot with Sweeping Sea Views, with access from both Wandering Shore Drive and Dove Lane. Discover an exceptional opportunity to own a beautiful, elevated double lot in the sought-after community of Rainbow Bay, North Eleuthera. With 90 feet of frontage on the popular Wandering Shore Drive and 66 feet at the end of the peaceful cul-de-sac on Dove Lane, this property offers the perfect blend of accessibility, privacy, and panoramic views. Set against the serene backdrop of Eleuthera's tranquil Bight side, lots 8 and 31, Blk 38 offer gorgeous sea views, gentle slopes, and lush natural coppice featuring mature tropical trees, wild orchids, and native flora and fauna. The land has been carefully under-brushed, revealing its full potential for a dream home, vacation retreat, or inco...read more on our website.

Bedrooms: 0  
Bathrooms: 0  
Lot Size: 19705  
Subdivision: Rainbow Bay  
Features: Family Oriented,  
Hillside, None, Pets  
Allowed, Quiet Area,  
Treed Lot, View - Ocean

8 WANDERING SHORE,  
Rainbow Bay, Eleuthera  
Phone:



**\$115.000 ID# M62540** [View Online](#)  
[www.sarlesrealty.com](http://www.sarlesrealty.com)