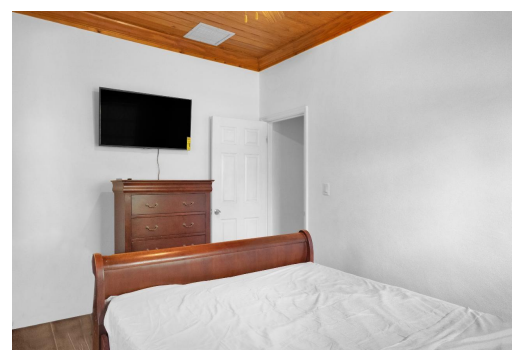
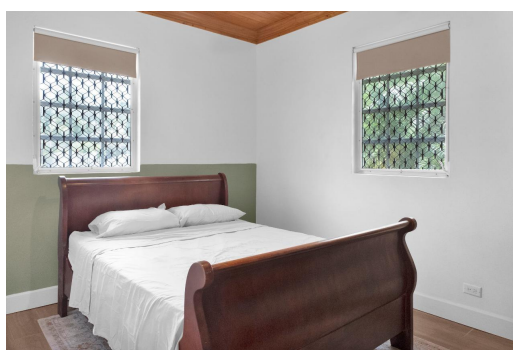


CHERRYWOOD AVE GROVE WEST, West Bay Street, New Providence/



Introducing a charming and conveniently located one-bedroom apartment with the added bonus of all...

Introducing a charming and conveniently located one-bedroom apartment with the added bonus of all utilities included. This newly renovated abode is fully enclosed with remote gate access. It's the perfect blend of comfort and luxury with modern finishes, quartz countertops, brand-new stainless-steel appliances. Step inside to discover a bright and airy atmosphere, showcasing an open layout. With the inclusion of all utilities; water, electricity, and internet, this apartment ensures a hassle-free living experience. This unit is pet-friendly, inviting to one small dog. Situated in the desirable neighbourhood of Grove West, residents will enjoy easy access to neighbouring amenities, shopping centres, and beaches. Don't miss the opportunity to call this place home. Schedule your viewing today...read more on our website.

Bedrooms: 1
Bathrooms: 1
Lot Size: 500
Subdivision: West Bay Street
Features: Cable, Furnished, Golf Course Nearby, No Pets, Pets Allowed, Quiet Area, Recreation Nearby, Shopping Nearby

CHERRYWOOD AVE GROVE WEST, West Bay Street, New Providence/Paradise Island
Phone:



\$2,150 ID# M62500 [View Online](#)
www.sarlesrealty.com